

WAAS CH <b>48818</b> <b>W14A</b>	APP CRS <b>144°</b>	Rwy Idg TDZE <b>1787</b> Apt Elev <b>1814</b>
--	------------------------	---

RNAV (GPS) RWY 14

MERCER COUNTY RGNL (HZE)

RNP APCH.

▼

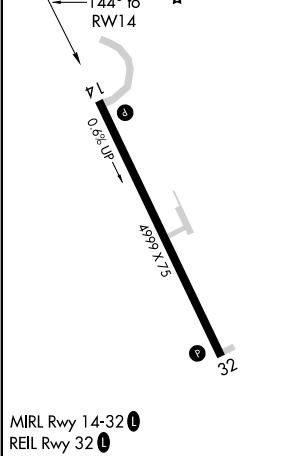
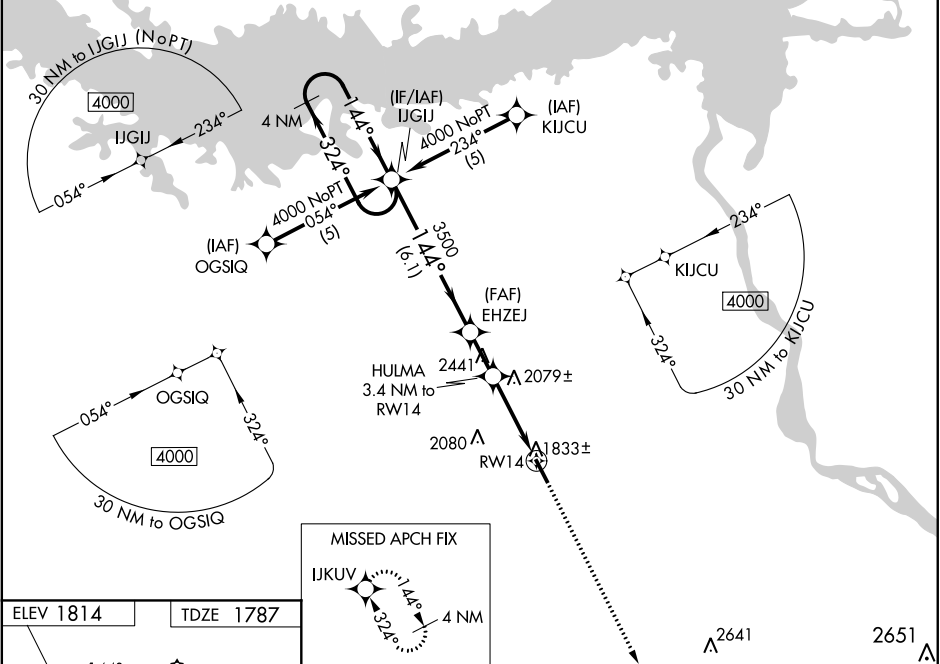
⚠

❄

When local altimeter setting not received, use Bismarck altimeter setting. Rwy 14 helicopter visibility reduction below 1 SM NA. For uncompensated Baro-VNAV systems, LNAV/VNAV NA below -18°C or above 54°C. Baro-VNAV NA when using Bismarck altimeter setting. When VGSI inoperative, procedure NA at night.

MISSED APPROACH:  
Climb to 4000 direct IKUV and hold.

AWOS-3PT <b>118.675</b>	MINNEAPOLIS CENTER <b>124.25 236.825</b>	UNICOM <b>122.8 (CTAF) 0</b>
----------------------------	---	---------------------------------



4 NM Holding Pattern

VGSI and RNAV glidepath not coincident (VGSI Angle 3.00/TCH 27).

4000

324°

144°

3500

EHZEJ

HULMA 3.4 NM to RWY 14

GP 3.00° TCH 45

6.1 NM

1.8 NM

3.4 NM

IKUV

\*LNAV only.

RWY 14

CATEGORY	A	B	C	D
LPV DA	2165-1¼ 378 (400-1¼)			NA
LNAV/VNAV DA	2231-1½ 444 (500-1½)			NA
LNAV MDA	2460-1 673 (700-1)		2460-2 673 (700-2)	NA
CIRCLING	2460-1 646 (700-1)		2460-2 646 (700-2)	NA