

WAAS CH 90521 W24A	APP CRS 241°	Rwy Idg TDZE Apt Elev	4400 1073 1073
--	------------------------	-----------------------------	---

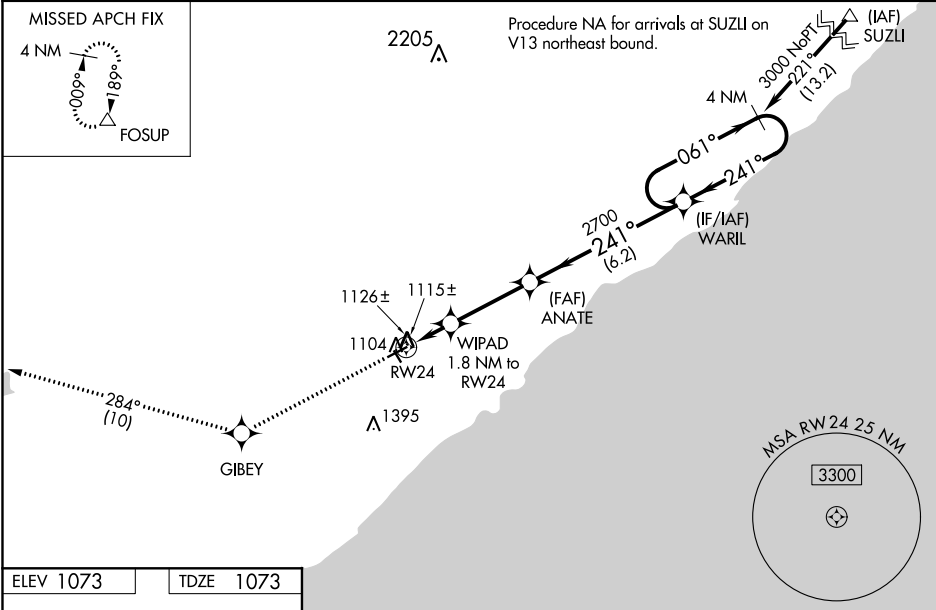
RNAV (GPS) RWY 24
RICHARD B HELGESON (TWM)

RNP APCH.

Baro-VNAV NA when using Silver Bay Muni altimeter setting. For uncompensated Baro-VNAV systems, LNAV/VNAV NA below -17°C or above 54°C. When local altimeter setting not received, use Silver Bay Muni altimeter setting and increase all DA 44 feet and all MDA 60 feet. Increase LPV and LNAV/VNAV Cats A/B visibility ½ mile. Rwy 24 helicopter visibility reduction below ¾ SM NA. VDP NA with Silver Bay Muni altimeter setting. Circling to Rwy 15, 33 NA.

MISSED APPROACH: Climb to 3600 direct GIBEY and on track 284° to FOSUP and hold.

AWOS-3 119.325	DULUTH APP CON 125.45 233.7	GCO 121.725	CTAF 122.9 0
--------------------------	---------------------------------------	-----------------------	------------------------



ELEV 1073 TDZE 1073

MIRL Rwy 6-24 0
REIL Rwy 6 and 24 0

3600	GIBEY	tr 284°	FOSUP	VGSI and RNAV glidepath not coincident (VGSI Angle 3.00/TCH 27).	
*LNAV only		WIPAD 1.8 NM to RW24	ANATE	WARIL	4 NM Holding Pattern
*0.9 NM to RW24		2700	2700	061°	3000
RW24		1680*	2700	241°	GP 3.00° TCH 40
0.9 NM		0.9 NM	3.2 NM	6.2 NM	
CATEGORY	A	B	C	D	
LPV DA	1323-7/8 250 (300-7/8)			NA	
LNAV/VNAV DA	1323-7/8 250 (300-7/8)			NA	
LNAV MDA	1380-1 307 (400-1)			NA	
CIRCLING	1600-1 527 (600-1)	1680-1 607 (700-1)		NA	

NC-1, 31 DEC 2020 to 28 JAN 2021

NC-1, 31 DEC 2020 to 28 JAN 2021