

WAAS CH <b>70618</b> <b>W13A</b>	APP CRS <b>127°</b>	Rwy Idg TDZE Apt Elev	<b>4202</b> <b>1402</b> <b>1402</b>
--	------------------------	-----------------------------	---

RNAV (GPS) RWY 13

BARNES COUNTY MUNI (BAC)

RNP APCH.

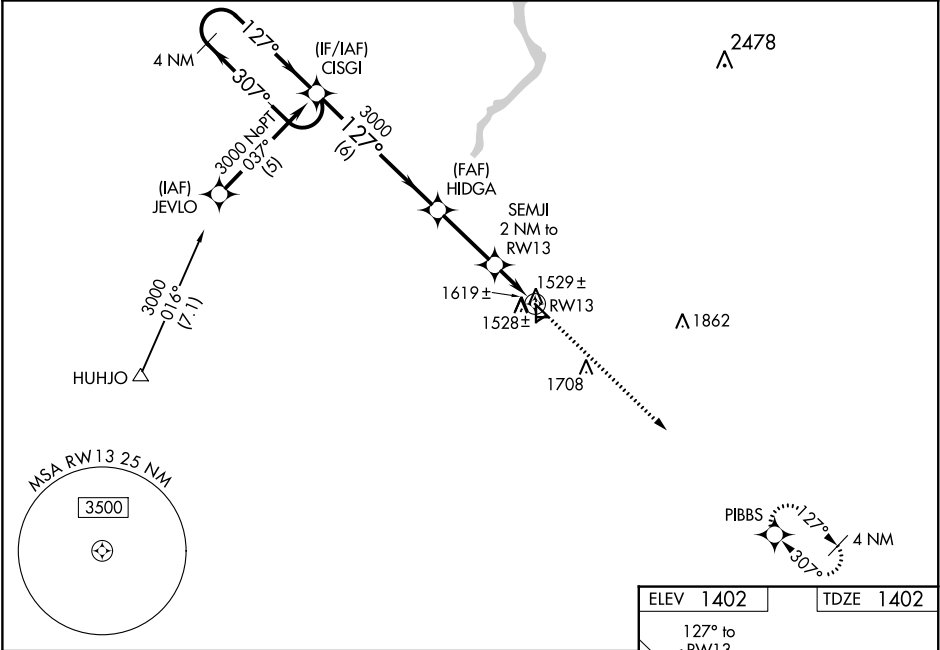
▼

▲

Baro-VNAV NA when using Jamestown altimeter setting. For uncompensated Baro-VNAV systems, LNAV/VNAV NA below -17°C or above 54°C. When local altimeter setting not received, use Jamestown altimeter setting and increase all DA 77 feet and all MDA 80 feet, increase LPV all Cats, LNAV/VNAV all Cats and LNAV Cat C visibility ¼ mile, and increase Circling Cat C visibility ½ mile. Circling NA to Rwy 5, 8, 17, 23, 26 and 35. Rwy 13 helicopter visibility reduction below ¾ SM NA.

MISSED APPROACH: Climb to 3100 direct PIBBS and hold.

AWOS-3 <b>118.725</b>	MINNEAPOLIS CENTER <b>124.2 270.3</b>	UNICOM <b>122.8 (CTAF) 1</b>
--------------------------	--	---------------------------------



VGSI and RNAV glidepath not coincident (VGSI Angle 3.00/TCH 28).				
4 NM Holding Pattern				
GP 3.00° TCH 40				
CISHI				
HIDGA				
SEMJ 2 NM to RWY 13				
RWY 13				
*2040				
6 NM				
2.8 NM				
2 NM				
CATEGORY	A	B	C	D
LPV DA	1652-1	250 (300-1)		NA
LNAV/VNAV DA	1889-1¾	487 (500-1¾)		NA
LNAV MDA	1880-1	478 (500-1)	1880-1¼ 478 (500-1¼)	NA
CIRCLING	1920-1 518 (600-1)	2000-1 598 (600-1)	2000-1½ 598 (600-1½)	NA

