

APP CRS  
271°

Rwy Idg	5010
TDZE	777
Apt Elev	778

RNAV (GPS) RWY 27  
RED WING RGNL (R.G.K)

RED WING RGNI (RGK)



DME/DME RNP-0.3 NA. VDP NA with South St. Paul altimeter setting. When local altimeter setting not received, use South St. Paul altimeter setting; increase all MDA 80 feet and LNAV Cat C visibility  $\frac{1}{2}$  mile, Circling Cat A and C visibility  $\frac{1}{4}$  mile. Helicopter visibility reduction below  $\frac{3}{4}$  SM NA. Inop table does not apply to LNAV Cat C.

ODALS



**MISSED APPROACH:**  
Climb to 3000 direct  
JUGAN and hold.

AWOS-3

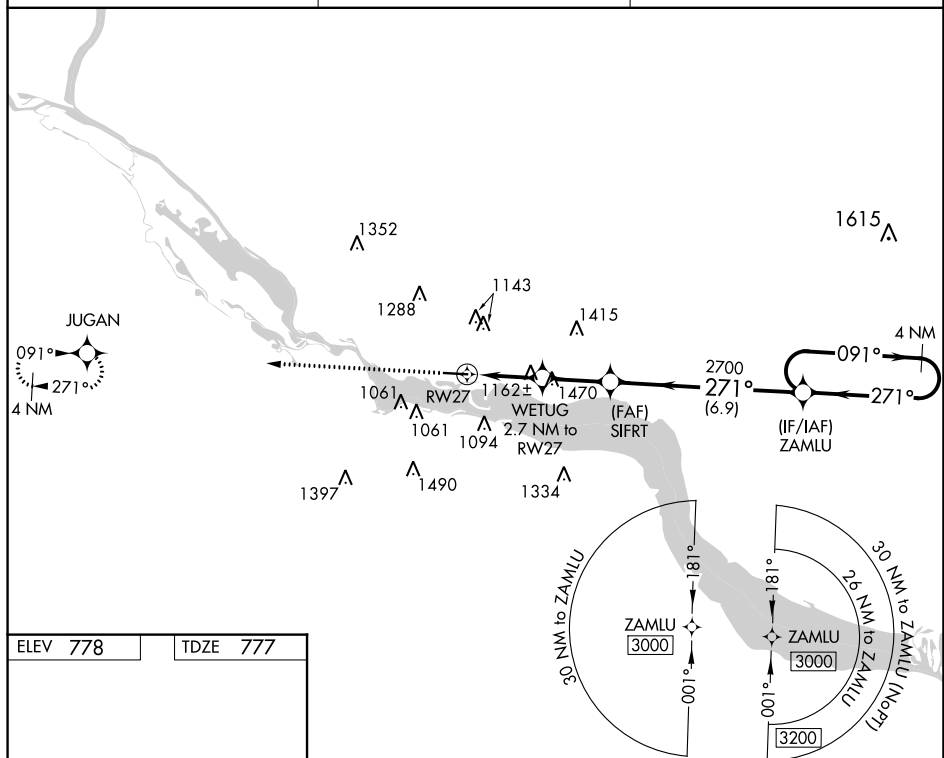
119.25

MINNEAPOLIS APP CON

121.2 335.65

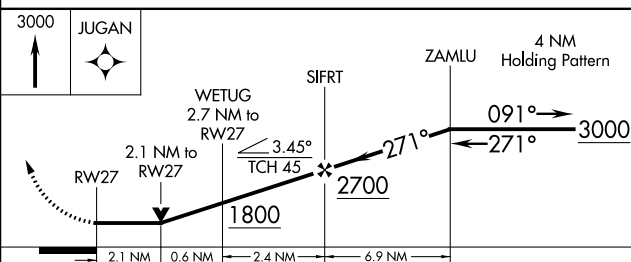
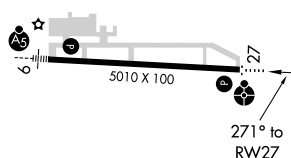
UNICOM

**123.05 (CTAF) L**



ELEV 778

TDZE	777
------	-----



CATEGORY	A	B	C	D
LNAV MDA	1520- $\frac{3}{4}$ 743 (800- $\frac{3}{4}$ )	1520-1 $\frac{1}{4}$ 743 (800-1 $\frac{1}{4}$ )	1520-2 743 (800-2)	NA
CIRCLING	1520-1 742 (800-1)	1520-1 $\frac{1}{4}$ 742 (800-1 $\frac{1}{4}$ )	1540-2 $\frac{1}{4}$ 762 (800-2 $\frac{1}{4}$ )	NA

RNAV (GPS) RWY 27