

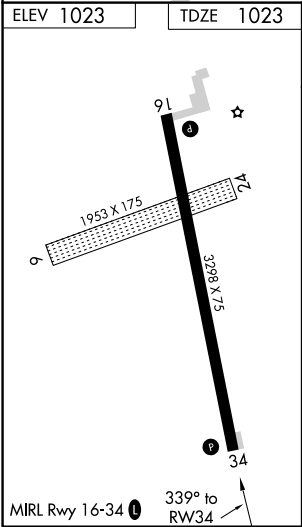
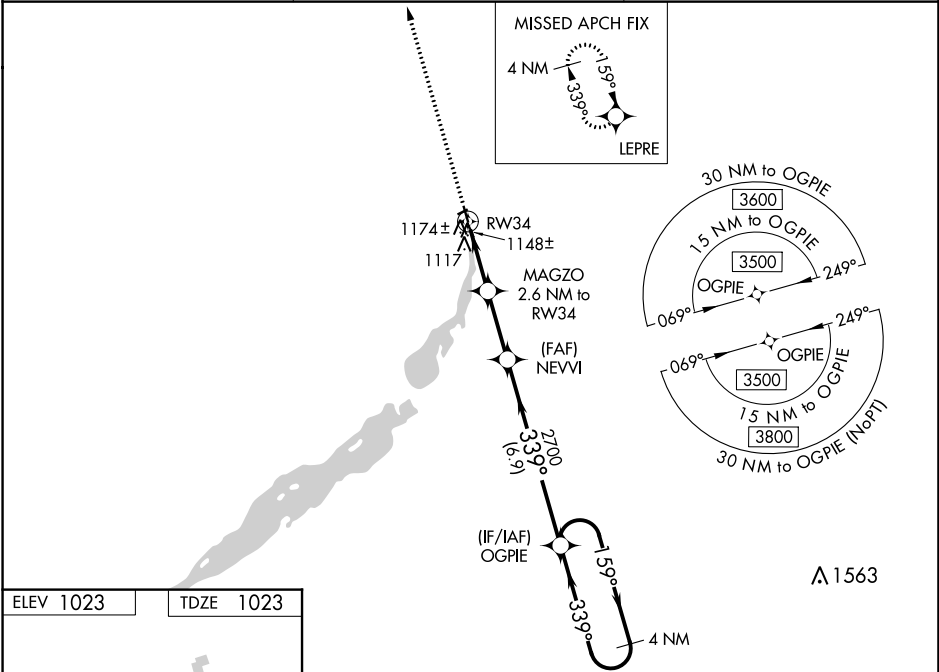
WAAS CH 86730 W34A	APP CRS 339°	Rwy Idg TDZE 1023 Apt Elev 1023
--	------------------------	---

RNAV (GPS) RWY 34
WHEATON MUNI (ETH)

⚠ When VGSi inop, Straight-in/Circling Rwy 34 procedure NA at night.
DME/DME RNP-0.3 NA. Visibility reduction by helicopters NA.
When local altimeter setting not received, use Wahpeton/Harry Stern altimeter setting and increase all MDA 80 feet and LP Cat C and LNAV Cat C visibility to 1 3/8 mile.

MISSED APPROACH: Climb to 3500
direct LEPRE and hold.

AWOS-3 118.775	MINNEAPOLIS CENTER 126.1 269.2	UNICOM 122.8 (CTAF) 0
--------------------------	--	---------------------------------



3500 ↑	LEPRE 	VGSi and descent angles not coincident (VGSi Angle 3.00/TCH 25).			4 NM Holding Pattern
MAGZO 2.6 NM to RW34					
NEVVI					
3.00 TCH 40					
2700					
1880					
2.6 NM 2.5 NM 6.9 NM					
CATEGORY		A	B	C	D
LP	MDA	1400-1 377 (400-1)			NA
LNAV	MDA	1440-1 417 (500-1)		1440-1 1/8 417 (500-1 1/8)	NA
CIRCLING		1480-1 457 (500-1)		1480-1 1/2 457 (500-1 1/2)	NA

NC-1, 31 DEC 2020 to 28 JAN 2021

NC-1, 31 DEC 2020 to 28 JAN 2021