

VORTAC GEP <b>117.3</b> Chan <b>120</b>	APP CRS <b>266°</b>	Rwy Idg TDZE Apt Elev <b>N/A</b> <b>N/A</b> <b>968</b>	<b>VOR-A</b> BUFFALO MUNI (CfE)
---	------------------------	---	------------------------------------

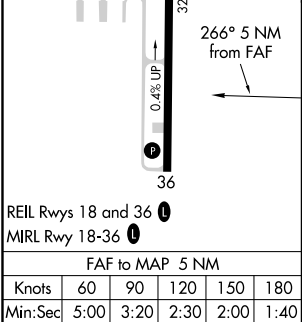
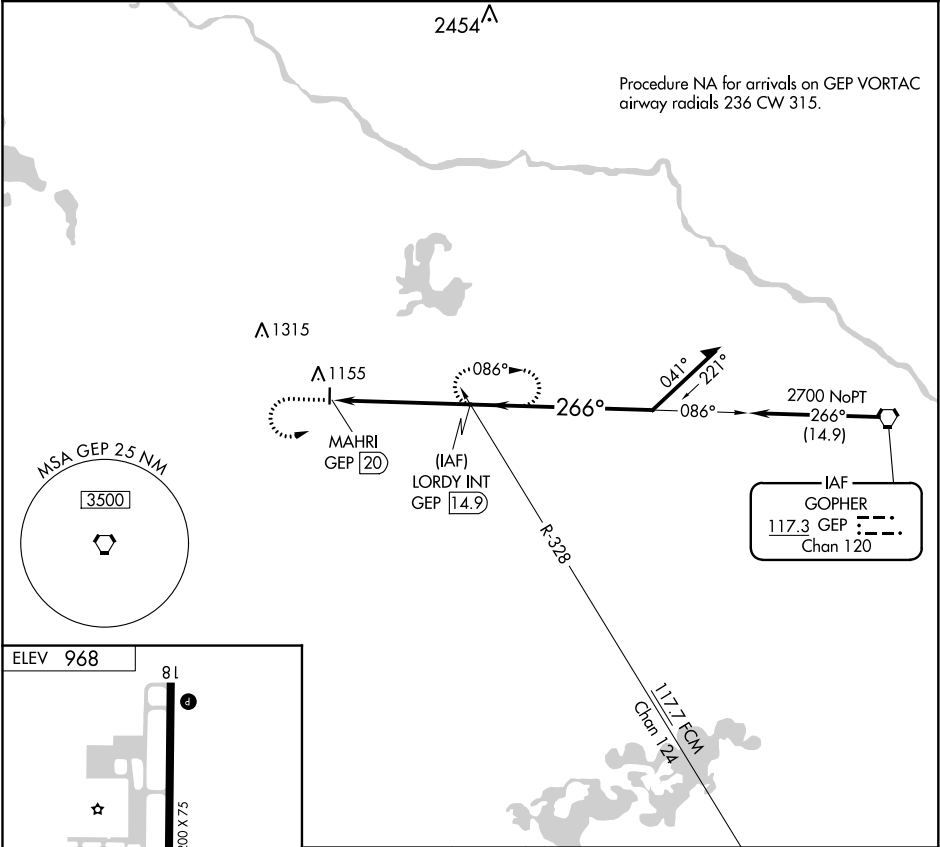
▼

▲

When local altimeter setting not received, use Maple Lake altimeter setting. When VGSI inoperative, procedure NA at night.

MISSED APPROACH: Climb to 2200 then climbing left turn to 3600 via GEP VORTAC R-266 to LORDY INT/GEP VORTAC 14.9 DME and hold.

AWOS-3 <b>120.45</b>	MINNEAPOLIS APP CON <b>126.5 335.65</b>	GCO <b>121.725</b>	UNICOM <b>122.8</b> (CTAF) <b>0</b>
-------------------------	--	-----------------------	--



2200	3600 GEP R-266	LORDY INT	LORDY INT GEP 14.9	Remain within 10 NM
MAHRI GEP 20		2700		
5 NM				
CATEGORY	A	B	C	D
<input checked="" type="checkbox"/> CIRCLING	1580-1	612 (700-1)	1580-1¾ 612 (700-1¾)	NA