

WAAS CH 77931 W33A	APP CRS 338°	Rwy Idg TDZE Apt Elev	4500 1384 1394
--	------------------------	-----------------------------	---

RNAV (GPS) RWY 33

GLENWOOD MUNI (GHW)

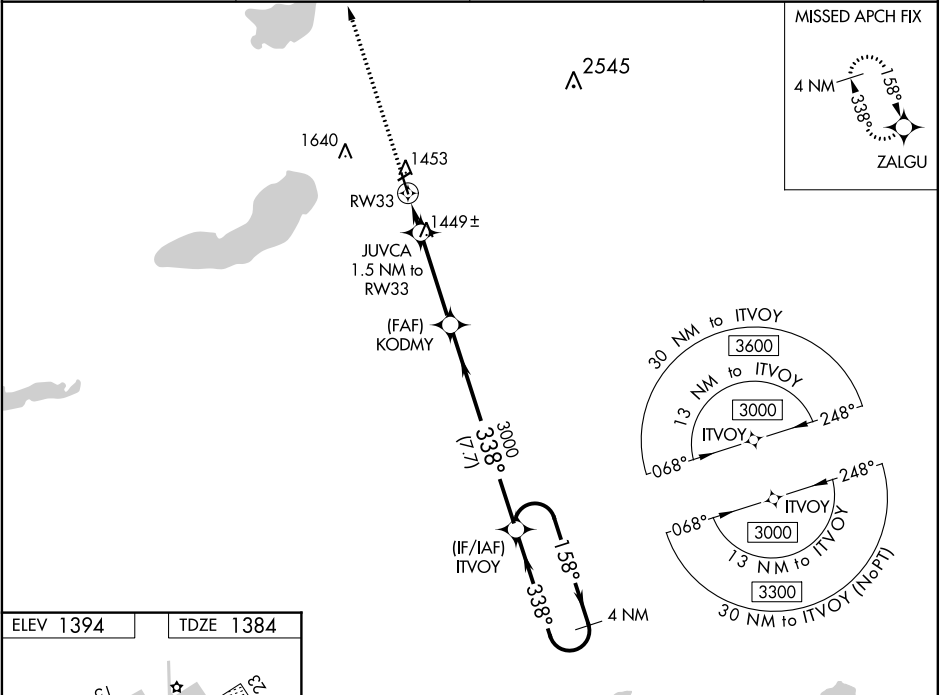
⚠

⚠

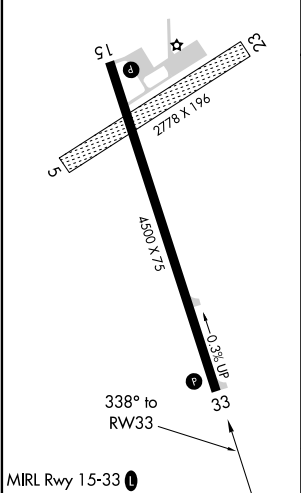
Baro-VNAV NA when using Alexandria altimeter setting. For uncompensated Baro-VNAV systems, LNAV/VNAV NA below -17°C (2°F) or above 54°C (130°F). DME/DME RNP-0.3 NA. Helicopter visibility reduction below 1 SM NA. When local altimeter setting not received, use Alexandria altimeter setting and increase all DA 36 feet and all MDA 40 feet. Circling NA to Rwy 5/23.

MISSED APPROACH:
Climb to 3000 direct ZALGU and hold.

AWOS-3 118.925	MINNEAPOLIS CENTER 126.1 269.2	GCO 121.725	CTAF 122.9 0
--------------------------	--	-----------------------	------------------------



ELEV 1394	TDZE 1384
-----------	-----------



3000

↑

ZALGU

✦

VGSI and RNAV glidepath not coincident
(VGSI Angle 3.00/TCH 25).

4 NM
Holding Pattern

*LNAV only.

KODMY

3000

ITVOY

JUVCA

1.5 NM to RW33

RW33

338°

158°

3000

3000

GP 3.00°
TCH 45

*1880

1.5 NM

3.5 NM

7.7 NM

CATEGORY	A	B	C	D
LPV DA	1634-1	250 (300-1)		NA
LNAV/VNAV DA	1634-1	250 (300-1)		NA
LNAV MDA	1700-1	316 (400-1)		NA
CIRCLING	1840-1 446 (500-1)	1860-1 466 (500-1)	1860-1½ 466 (500-1½)	NA