

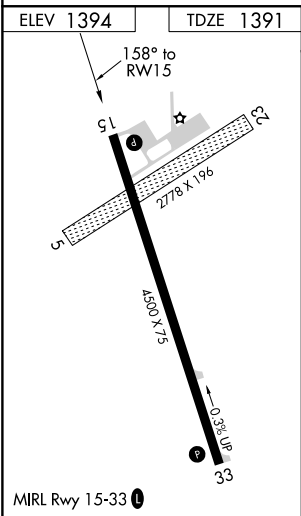
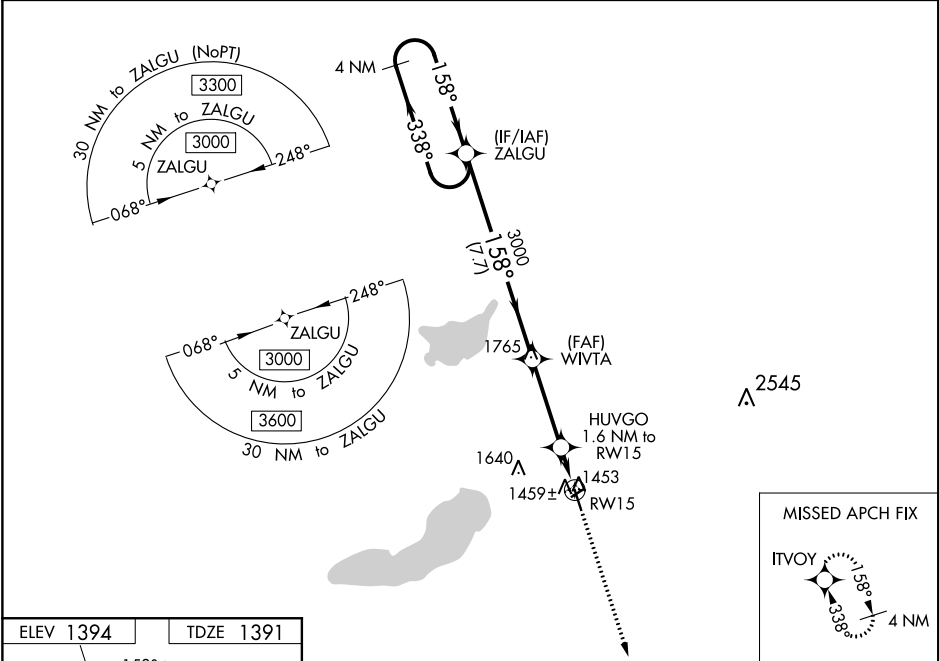
WAAS CH 70333 W15A	APP CRS 158°	Rwy Idg TDZE Apt Elev	4500 1391 1394
--	------------------------	-----------------------------	---

RNAV (GPS) RWY 15
GLENWOOD MUNI (GHW)

⚠ For uncompensated Baro-VNAV systems, LNAV/VNAV NA below -17°C (-2°F) or above 54°C (130°F). DME/DME RNP-0.3 NA. Helicopter visibility reduction below 1 SM NA. When local altimeter setting not received, use Alexandria altimeter setting and increase DA 36 feet and all MDA 40 feet. Baro-VNAV and VDP NA when using Alexandria altimeter setting. Circling NA to Rwy's 5/23.

MISSED APPROACH:
Climb to 3000 direct ITVOY and hold.

AWOS-3 118.925	MINNEAPOLIS CENTER 126.1 269.2	GCO 121.725	CTAF 122.9 0
--------------------------	--	-----------------------	------------------------



4 NM Holding Pattern		VGSI and RNAV glidepath not coincident (VGSI Angle 3.00/TCH 33).		3000 ↑	ITVOY ✦
				* LNAV only	
GP 3.00° TCH 45		7.7 NM		3.3 NM	
				0.7 NM	
				0.9 NM	
CATEGORY	A	B	C	D	
LPV DA	1641-1	250 (300-1)	NA		
LNAV/ VNAV DA	1641-1	250 (300-1)	NA		
LNAV MDA	1720-1		329 (400-1)		NA
CIRCLING	1840-1 446 (500-1)	1860-1 466 (500-1)	1860-1½ 466 (500-1½)		NA

NC-1, 31 DEC 2020 to 28 JAN 2021

NC-1, 31 DEC 2020 to 28 JAN 2021