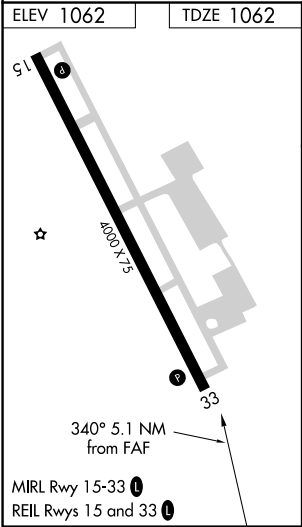
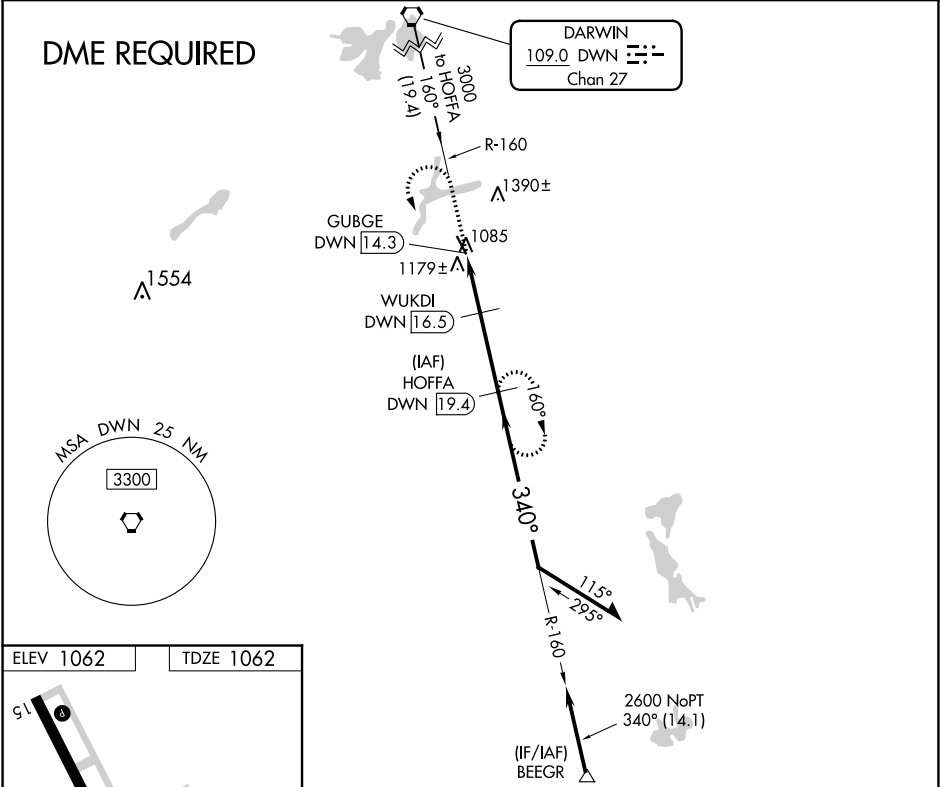


VORTAC DWN	APP CRS	Rwy Idg	4000
109.0	340°	TDZE	1062
Chan 27		Apt Elev	1062

VOR RWY 33

HUTCHINSON MUNI-BUTLER FIELD (HCD)

DME required.		MISSED APPROACH: Climb to 2000 then climbing left turn to 2700 on DWN VORTAC R-160 to HOFFA/19.4 DME and hold.	
AWOS-3	MINNEAPOLIS CENTER	GCO	UNICOM
118.525	127.1 290.2	121.725	122.8 (CTAF) 0



2000 2700 DWN R-160		HOFFA DWN 19.4	VGSI and descent angles not coincident (VGSI Angle 3.00/TCH 40).	
GUBGE DWN 14.3		WUKDI DWN 16.5	Remain within 10 NM	
1600		HOFFA DWN 19.4	2700	
1.2 NM		1 NM	2.9 NM	
CATEGORY	A	B	C	D
S-33	1460-1	398 (400-1)	1460-1 1/8 398 (400-1 1/8)	NA
CIRCLING	1540-1	478 (500-1)	1540-1 1/2 478 (500-1 1/2)	NA

NC-1, 31 DEC 2020 to 28 JAN 2021

NC-1, 31 DEC 2020 to 28 JAN 2021