

WAAS CH <b>90140</b> <b>W12A</b>	APP CRS <b>128°</b>	Rwy Idg TDZE Apt Elev	<b>4652</b> <b>2706</b> <b>2706</b>
--	------------------------	-----------------------------	---

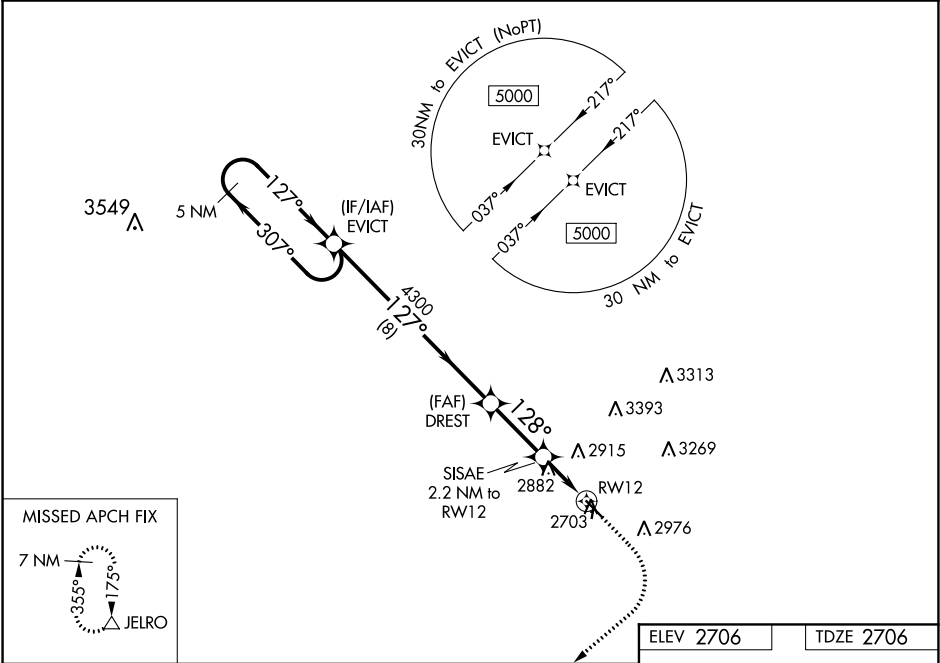
RNAV (GPS) RWY 12

HETTINGER MUNI (HEI)

**⚠** For uncompensated Baro-VNAV systems, LNAV/VNAV NA below -20°C (-4°F) or above 54°C (130°F). DME/DME RNP-0.3 NA. Circling NA northeast of Rwy 12-30. Circling NA to Rwy 17 and 35.

MISSED APPROACH: Climb to 3200, then climbing right turn to 9000 direct JELRO and hold, continue climb-in-hold to 9000.

ASOS <b>119.925</b>	MINNEAPOLIS CENTER <b>124.25 236.825</b>	UNICOM <b>122.8</b> (CTAF)
------------------------	---	-------------------------------



VGSI and RNAV glidepath not coincident. (VGSI Angle 3.00/TCH 25)				
5 NM Holding Pattern				
GP 3.00° TCH 40				
8 NM 2.7 NM 0.9 NM 1.3 NM				
CATEGORY	A	B	C	D
LPV DA	2956-1		250 (300-1)	
LNAV/VNAV DA	3168-1½		462 (500-1½)	
LNAV MDA	3140-1	434 (500-1)	3140-1¼	434 (500-1¼)
CIRCLING	3180-1 474 (500-1)	3240-1 534 (600-1)	3240-1½ 534 (600-1½)	3460-2½ 754 (800-2½)

ELEV 2706 TDZE 2706

128° to RWY 12

MIRL Rwy 12-30

NC-1, 31 DEC 2020 to 28 JAN 2021

NC-1, 31 DEC 2020 to 28 JAN 2021