

WAAS CH 78131 W16A	APP CRS 164°	Rwy Idg TDZE 1206 Apt Elev 1206
--	------------------------	---

RNAV (GPS) RWY 16

AITKIN MUNI-STEVE KURTZ FIELD (AIT)

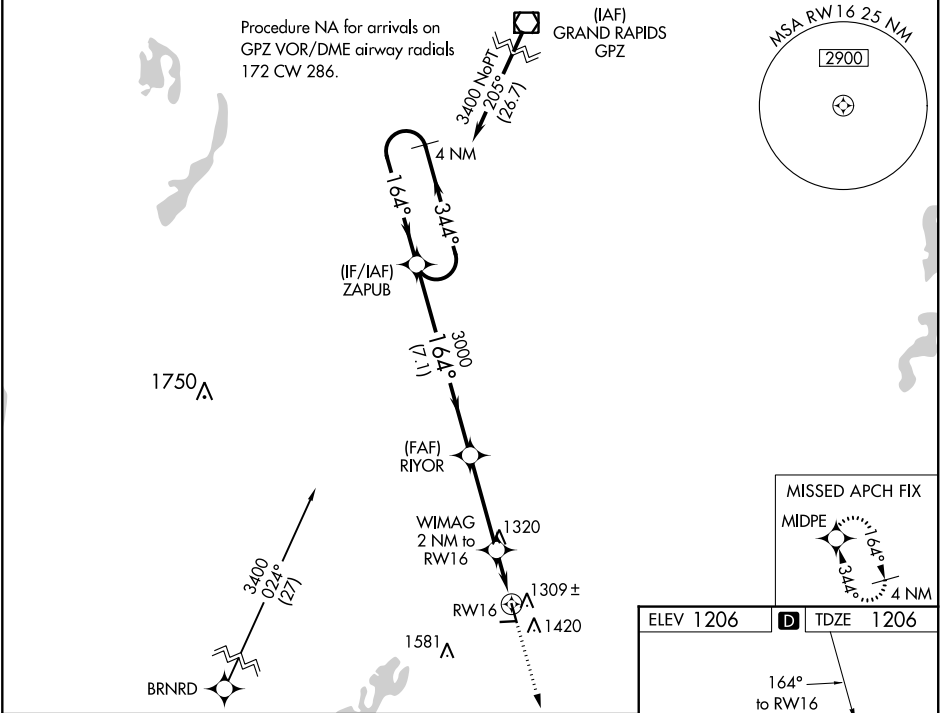
⚠

For uncompensated Baro-VNAV systems, LNAV/VNAV NA below -17°C (2°F) or above 54°C (130°F).
Baro-VNAV and VDP NA when using Mc Gregor altimeter setting. DME/DME RNP-0.3 NA. When local altimeter setting not received; use Mc Gregor altimeter setting and increase all DA and MDA 40 feet; increase LPV all Cats visibilities ¼ SM, LNAV/VNAV all Cats and LNAV Cat C visibilities ½ SM. Circling NA to Rwy 8 and 26. Rwy 16 helicopter visibility reduction below ¾ SM NA.

MISSED APPROACH:

Climb to 3400 direct MIDPE and hold.

AWOS-3 118.675	MINNEAPOLIS CENTER 118.05 239.0	UNICOM 123.05 (CTAF) 0
--------------------------	---	----------------------------------



4 NM Holding Pattern ZAPUB 3400 ← 344° 164° →					VGSI and RNAV glidepath not coincident (VGSI Angle 3.00/TCH 26). 3400 MIDPE *LNAV only *1 NM to RW16 RW16 *1880 3000 3000 7.1 NM 3.5 NM 1 NM 1 NM				
GP 3.00° TCH 40									
CATEGORY	A		B		C		D		
LPV DA	1518-1		312 (400-1)				NA		
LNAV/VNAV DA	1607-1 ¾		401 (500-1 ¾)				NA		
LNAV MDA	1560-1		354 (400-1)				NA		
CIRCLING	1780-1		574 (600-1)		1900-2 694 (700-2)		NA		

