



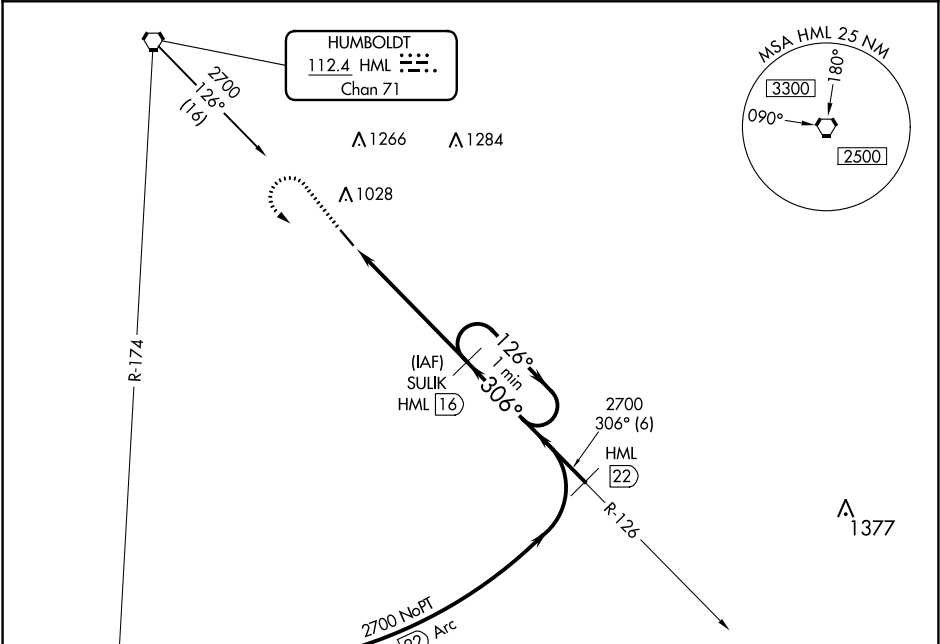
VORTAC HML	APP CRS	Rwy Idg	4007
112.4	306°	TDZE	819
Chan 71		Apt Elev	819

VOR/DME RWY 31  
HALLOCK MUNI (HCO)

  
NA

MISSED APPROACH: Climb to 2000 then climbing left turn to 2700 via HML R-126 to SULIK and hold.

AWOS-3 126.475	MINNEAPOLIS CENTER 132.15 269.6	UNICOM 122.8 (CTAF) 
-------------------	------------------------------------	--



2000  
↑

2700  
HML R-126

SULIK  
HML 16

VGSI and descent angles not coincident  
(VGSI angle 3.00/TCH 42)

One Minute Holding Pattern

HML 11.3

HML 10.2

306°

126°

306°

2700

2.98°

TCH 30



1.1

4.7 NM

CATEGORY	A	B	C	D
S-31	1220-1	401 (500-1)	1220-1¼	401 (500-1¼)
CIRCLING	1380-1	561 (600-1)	1380-1½	1380-2
			561 (600-½)	561 (600-2)

ELEV 819

TDZE 819

REIL Rwy 13 and 31   
MIRL Rwy 13-31 

NC-1, 31 DEC 2020 to 28 JAN 2021

NC-1, 31 DEC 2020 to 28 JAN 2021