

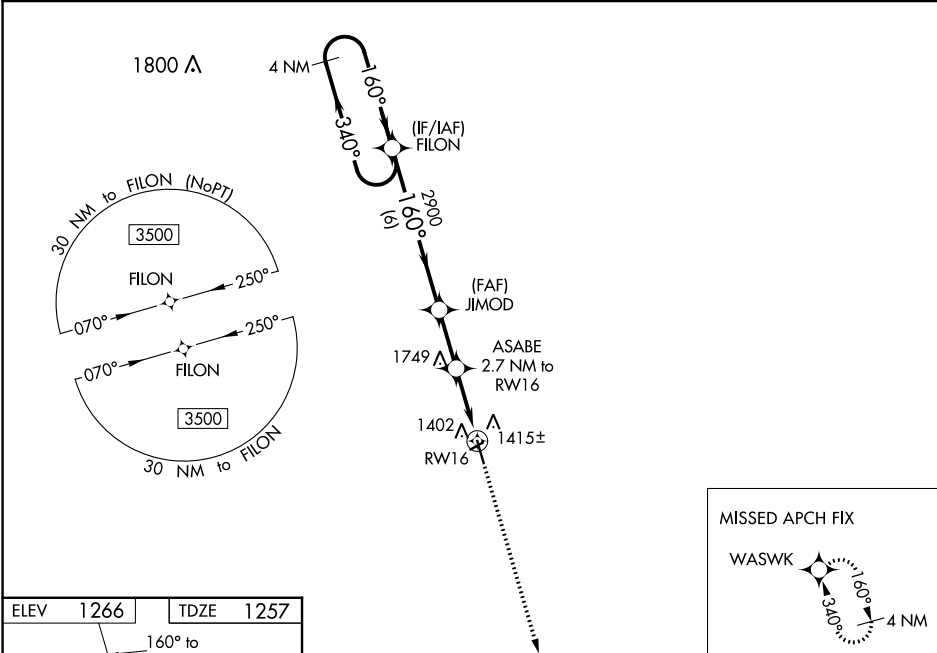
WAAS CH <b>93936</b> <b>W16A</b>	APP CRS <b>160°</b>	Rwy Idg TDZE <b>1257</b> Apt Elev <b>1266</b>
--	------------------------	---

**RNAV (GPS) RWY 16**  
GWINNER-ROGER MELROE FIELD (GWR)

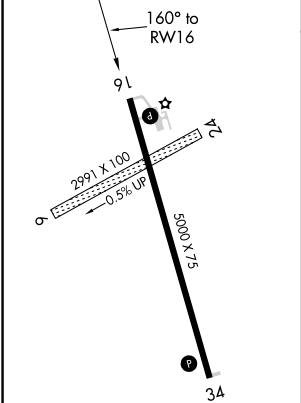
**⚠** For uncompensated Baro-VNAV systems, LNAV/VNAV NA below -17°C (2°F) or above 47°C (117°F). DME/DME RNP-0.3 NA. Circling NA to Rwy 6 and 24. Baro-VNAV and VDP NA when using Fargo altimeter setting. When local altimeter setting not received, use Fargo altimeter setting: increase LPV DA to 1683 feet and visibility ¾ SM, and LNAV/VNAV DA to 1803 feet and visibility ¾ SM; increase all MDAs 180 feet and visibility LNAV Cat C/D ¾ SM, and Circling Cat C ¾ SM, and Circling Cat D ½ SM.

**MISSED APPROACH:**  
Climb to 3500 direct  
WASWK and hold.

AWOS-3 <b>118.325</b>	MINNEAPOLIS CENTER <b>127.35 278.3</b>	UNICOM <b>122.7 (CTAF) 0</b>
--------------------------	---	---------------------------------



ELEV <b>1266</b>	TDZE <b>1257</b>
------------------	------------------



4 NM Holding Pattern FILON				3500	WASWK
VGSI and RNAV glidepath not coincident (VGSI Angle 3.00/TCH 25).				3500	WASWK
GP 3.10° TCH 40				2900	ASABE 2.7 NM to RW16
JIMOD				2900	*1.2 NM to RW16
ASABE 2.7 NM to RW16				*2180	RW16
6 NM				2.2 NM	1.5 NM
CATEGORY				A	B
LPV DA				1507-1	250 (300-1)
LNAV/VNAV DA				1627-1¼	370 (400-1¼)
LNAV MDA				1660-1 403 (400-1)	1660-1½ 403 (400-1½)
CIRCLING				1780-1 514 (600-1)	1840-1½ 574 (600-1½) 2060-2½ 794 (800-2½)

MIRL Rwy 16-34  
REIL Rwy 16 and 34