

VOR/DME STC	APP CRS	Rwy Idg	7000
<u>112.1</u>	<u>320°</u>	TDZE	1020
Chan 58		Apt Elev	1031

VOR RWY 31
ST CLOUD RGNL (STC)

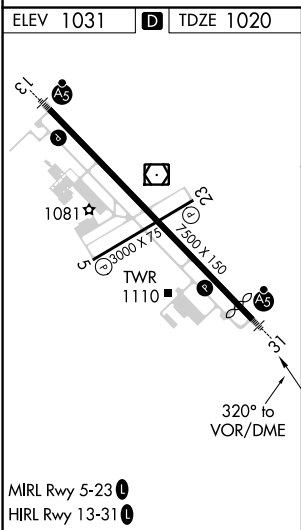
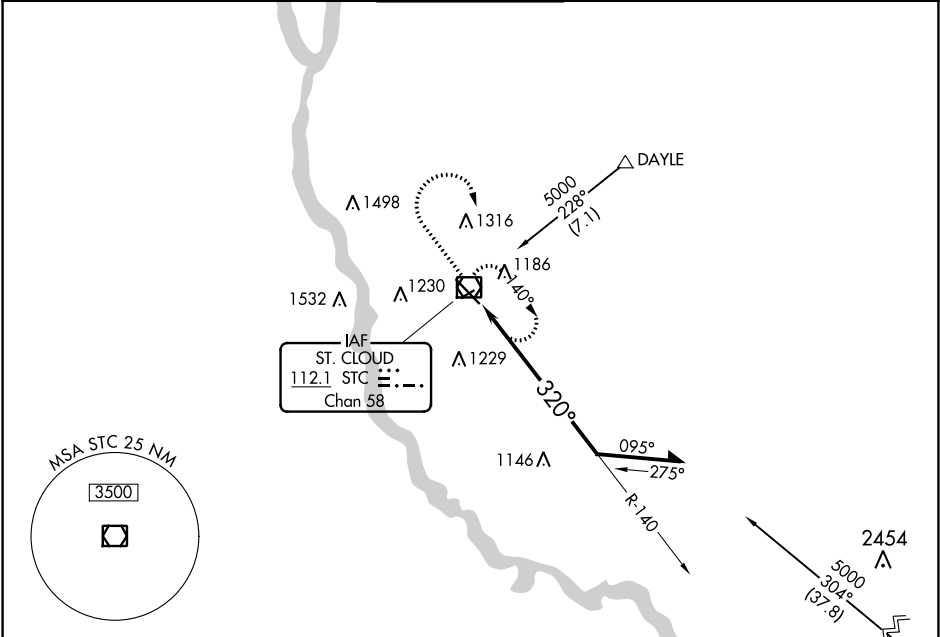
⚠ For inop ALS, increase S-31 Cat C and D visibility to 1½ SM.




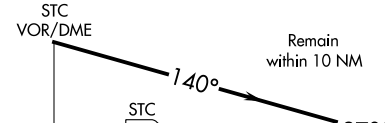
MALSR

A5

MISSED APPROACH: Climb to 2700 then right turn direct STC VOR/DME and hold.

ATIS 119.375	MINNEAPOLIS CENTER 121.05 397.9	ST. CLOUD TOWER ★ 118.25 (CTAF) 0	GND CON 123.75	UNICOM 123.5
------------------------	---	--	--------------------------	------------------------



						
CATEGORY	A		B		C	D
S-31	1460-½ 440 (500-½)		1460-¾ 440 (500-¾)		1460-1 440 (500-1)	
CIRCLING	1500-1 469 (500-1)		1500-1½ 469 (500-1½)		1620-2 589 (600-2)	

NC-1, 31 DEC 2020 to 28 JAN 2021

NC-1, 31 DEC 2020 to 28 JAN 2021