

LOC I-MKT <u>108.7</u>	APP CRS 331°	Rwy Idg 6600 TDZE 1021 Apt Elev 1021
----------------------------------	------------------------	---

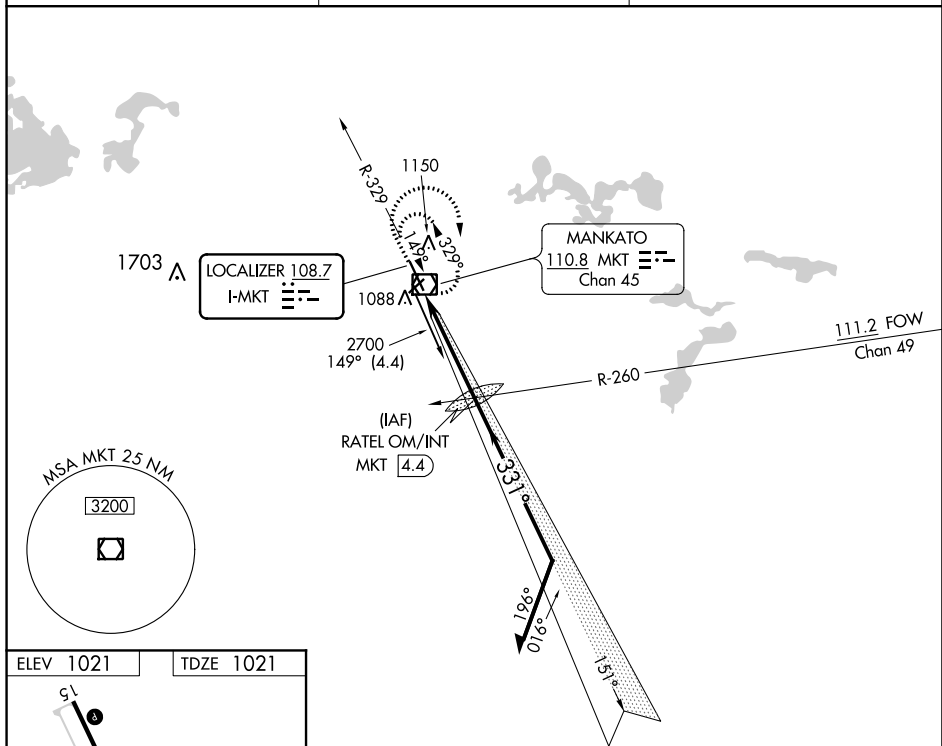
COPTER ILS or LOC RWY 33
MANKATO RGNL (MKT)

T For inoperative MALS/R increase visibility to ½ mile. When local
A NA altimeter setting not received, use Waseca altimeter setting:
 increase DA to 1278 feet; increase MDA 60 feet.



MISSED APPROACH: Climb to 2000 then climbing right turn to 2700 direct MKT VOR/DME and hold

AWOS-3PT 118.175	MINNEAPOLIS CENTER 135.0 306.9	UNICOM 122.725 (CTAF) 0
----------------------------	--	-----------------------------------



Map of the FAF area showing the 331° 4.3 NM from FAF, 0.3% UP, and various runways (MIRL Rwy 4-22, HIRL Rwy 15-33, REIL Rwy 4, 15 and 22).

2000
↑

2700
↗

MKT

RATL OM/INT
MKT 4.4

Remain within 10 NM

151°

2441

331°

2700

2500

VGSI and ILS glidepath not coincident
(VGSI Angle 3.00/TCH 49).

GS 3.00°
HCH 45

4.3 NM

CATEGORY	COPTER	B	C	D
S-ILS 33	1221- ¹ / ₄ 200 (200- ¹ / ₄)		NA	
S-LOC 33	1420- ¹ / ₄ 399 (400- ¹ / ₄)		NA	
CIRCLING		NA		