

WAAS
CH **69304**
W31A

APP CRS
308°

Rwy Idg
TDZE **897**
Apt Elev **900**

RNAV (GPS) RWY 31

CROOKSTON MUNI-KIRKWOOD FIELD (CKN)

RNP APCH.

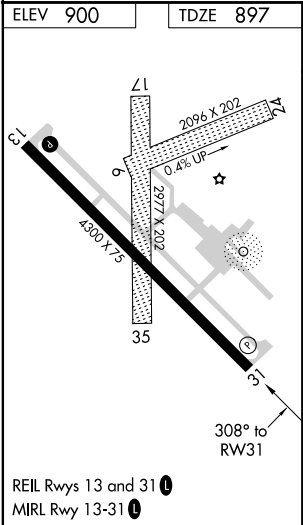
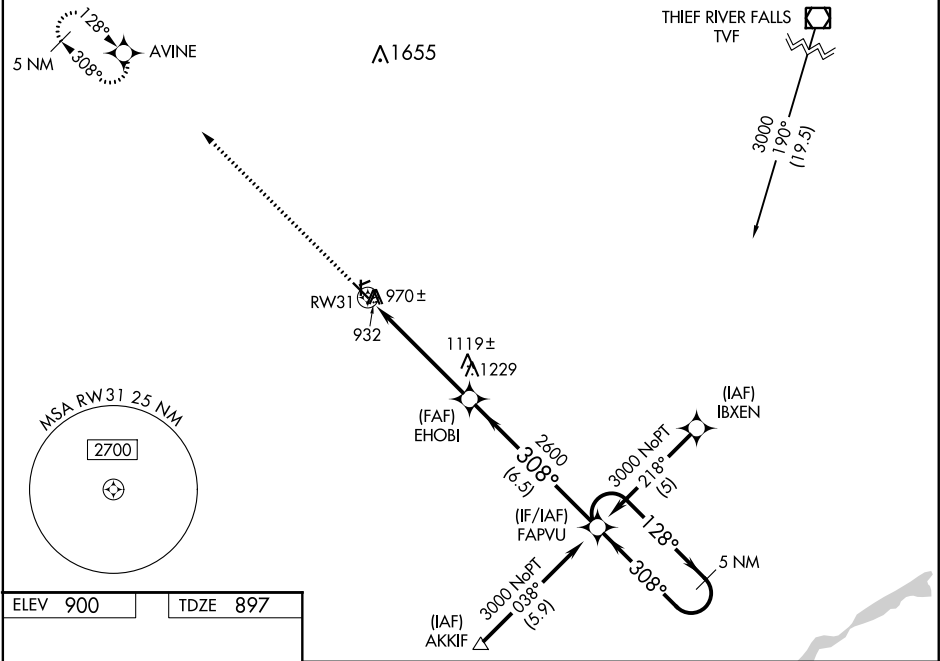
▽

⚠

Baro-VNAV NA when using Grand Forks altimeter setting. For uncompensated Baro-VNAV systems, LNAV/VNAV NA below -16°C (4°F) or above 54°C (130°F). If local altimeter setting not received, use Grand Forks altimeter setting and increase all DAs 62 feet and all MDAs 80 feet. Visibility reduction by helicopters NA. Circling Rwys 6, 24, 17, 35 NA at night.

MISSED APPROACH:
Climb to 3000 direct
AVINE and hold.

AWOS-3 126.425	GRAND FORKS APP CON 118.1 318.1	CLNC DEL 118.15	UNICOM 122.7 (CTAF)
--------------------------	---	---------------------------	-------------------------------



3000

AVINE

VGS and RNAV glidepath not coincident.

EHOB

FAPVU

5 NM Holding Pattern

128° →

← 308°

3000

GP 3.00°

TCH 40

CATEGORY	A	B	C	D
LPV DA	1157-1	260 (300-1)		NA
LNAV/VNAV DA	1320-1½	423 (500-1½)		NA
LNAV MDA	1380-1	483 (500-1)	1380-1¼ 483 (500-1¼)	NA
CIRCLING	1380-1	480 (500-1)	1380-1½ 480 (500-1½)	NA