

WAAS
CH **72704**
W13A

APP CRS
128°

Rwy Idg
TDZE **896**
Apt Elev **900**

RNAV (GPS) RWY 13

CROOKSTON MUNI-KIRKWOOD FIELD (CKN)

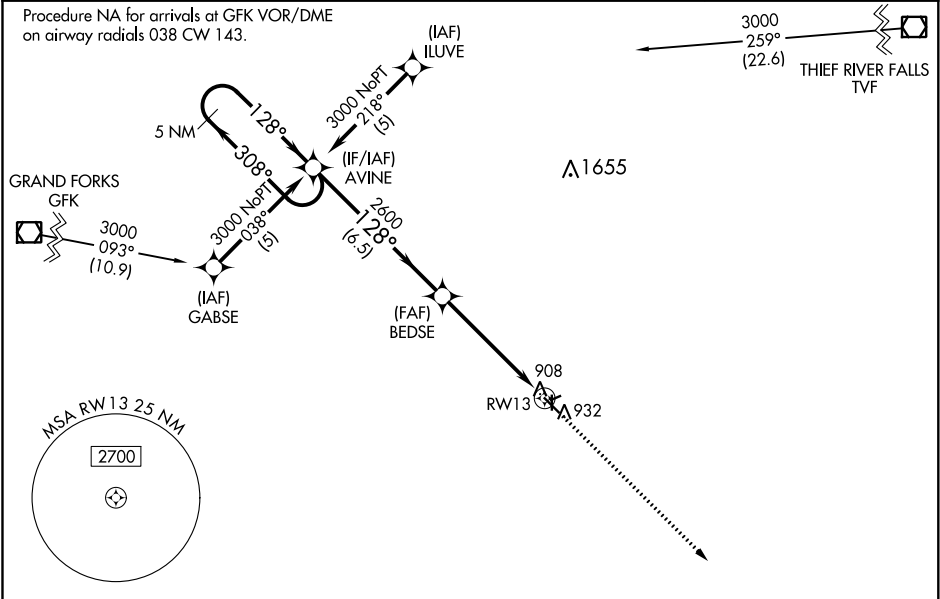
RNP APCH.

▼

Baro-VNAV NA when using Grand Forks altimeter setting. For uncompensated Baro-VNAV systems, LNAV/VNAV NA below -16°C (4°F) or above 54°C (130°F). If local altimeter setting not received, use Grand Forks altimeter setting and increase all DAs 62 feet and all MDAs 80 feet. Circling Rwy 6, 24, 17, 35 NA at night.

MISSED APPROACH: Climb to 3000 direct FAPVU and hold.

AWOS-3 126.425	GRAND FORKS APP CON 118.1 318.1	CLNC DEL 118.15	UNICOM 122.7 (CTAF) 0
--------------------------	---	---------------------------	---------------------------------



ELEV 900 TDZE 896

128° to RW13

2096 X 202

0.4% UP

2977 X 202

4300 X 75

35

31

VGSI and RNAV glidepath not coincident (VGSI Angle 3.00/TCH 30).

5 NM Holding Pattern

3000 308° 128° 128° 2600 6.5 NM 5.2 NM

GP 3.00° TCH 40

3000 FAPVU

5 NM 128° 308°

CATEGORY	A	B	C	D
LPV DA	1146-1	250 (300-1)		NA
LNAV/VNAV DA	1210-1	314 (400-1)		NA
LNAV MDA	1360-1	464 (500-1)	1360-1¼ 464 (500-1¼)	NA
CIRCLING	1360-1	460 (500-1)	1360-1½ 460 (500-1½)	NA

REIL Rwy 13 and 31 0

MIRL Rwy 13-31 0