

NDB CKN

400

APP CRS

122°

Rwy Idg

4300

TDZE

896

Apt Elev

900

NDB RWY 13

CROOKSTON MUNI-KIRKWOOD FIELD (CKN)

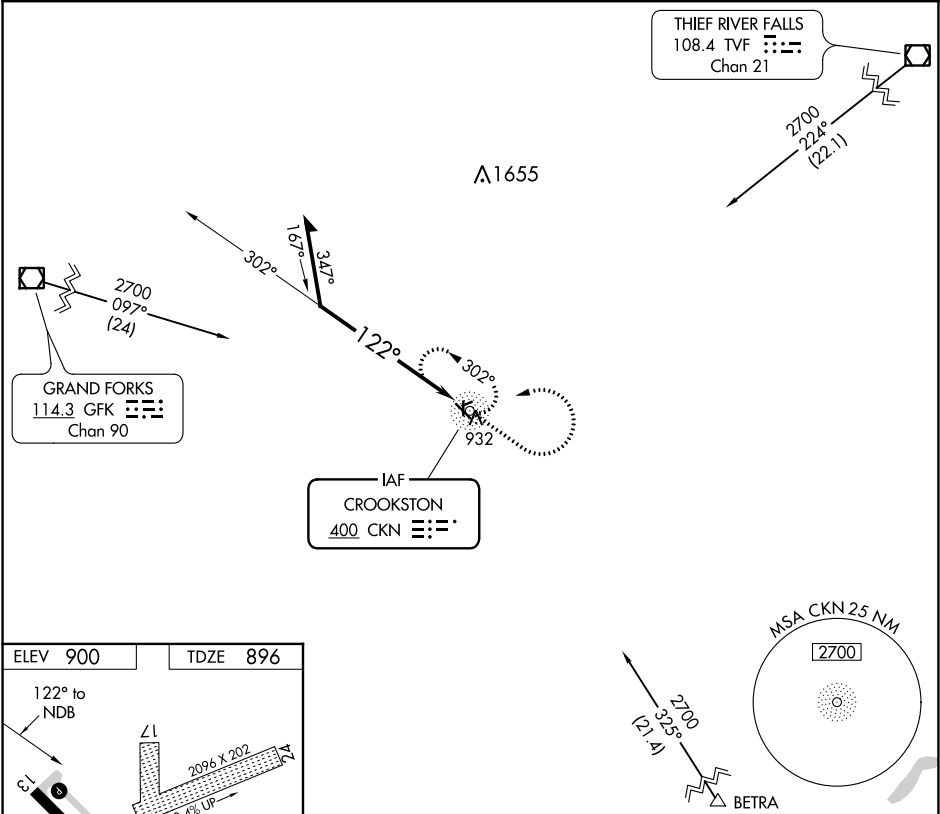
NA

When local altimeter setting not received, use Grand Forks Intl altimeter setting and increase all MDA 80 feet, increase all Cat C visibilities ¼ mile. Circling Rwy 6, 24, 17, 35 NA at night.

MISSED APPROACH:

Climb to 2700 then left turn direct CKN NDB and hold.

AWOS-3 126.425	GRAND FORKS APP CON 118.1 318.1	CLNC DEL 118.15	UNICOM 122.7 (CTAF) 0
-------------------	------------------------------------	--------------------	--------------------------



ELEV 900

TDZE 896

122° to NDB

13

2096 X 202

2977 X 202

4300 X 75

35

31

REIL Rwy 13 and 31 0

MIRL Rwy 13-31 0

Remain within 10 NM

CKN NDB

2700

302°

122°

2700

325° (21.4)

BETRA

CKN

CATEGORY	A	B	C	D
S-13	1440-1	544 (600-1)	1440-1½ 544 (600-1½)	NA
CIRCLING	1440-1	540 (600-1)	1440-1½ 540 (600-1½)	NA