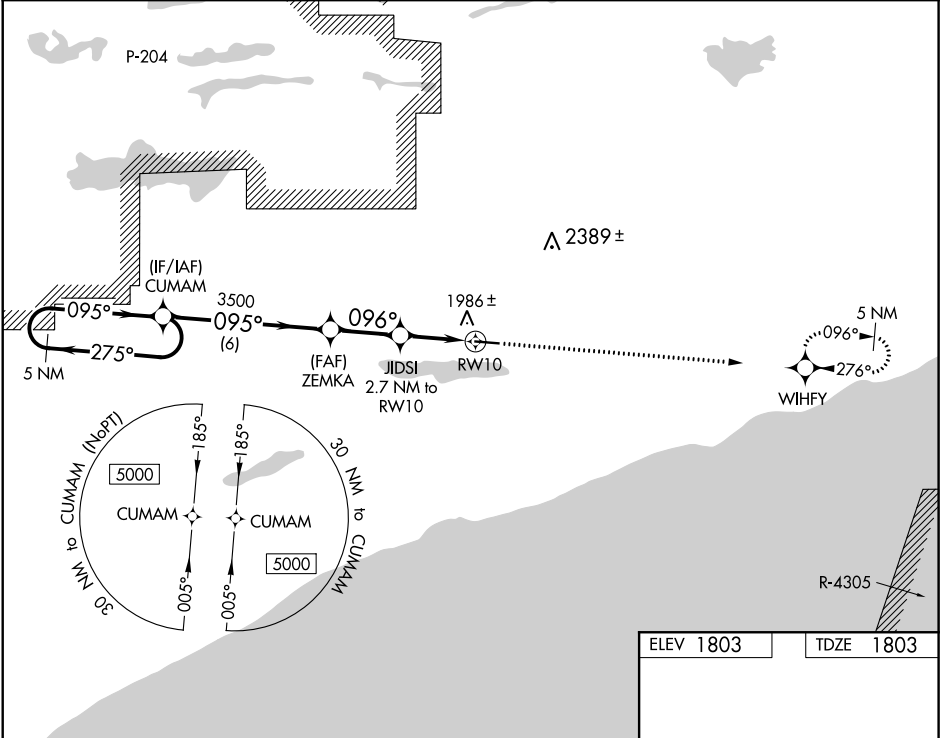


WAAS CH 45920 W10A	APP CRS 096°	Rwy Idg TDZE Apt Elev	5002 1803 1803
--	------------------------	-----------------------------	---

RNAV (GPS) RWY 10
GRAND MARAIS/COOK COUNTY (CKC)

RNP APCH. Rwy 10 helicopter visibility reduction below 1 SM NA. Procedure NA at night. -30°C	MISSED APPROACH: Climb to 7000 direct WIFHY and hold, continue climb-in-hold to 7000.
---	--

AWOS-3 119.925	MINNEAPOLIS CENTER 127.9 281.45	UNICOM 122.8 (CTAF)
--------------------------	---	-------------------------------



5 NM Holding Pattern		VGSI and descent angles not coincident (VGSI Angle 3.00/TCH 41).		7000	WIFHY
CATEGORY	A	B	C	D	
LP MDA	2200-1	397 (400-1)	2200-1 1/8	397 (400-1 1/8)	
LNAV MDA	2240-1	437 (500-1)	2240-1 1/4	437 (500-1 1/4)	
CIRCLING	2300-1	497 (500-1)	2380-1 1/2 577 (600-1 1/2)	2640-2 3/4 837 (900-2 3/4)	MIRL Rwy 10-28 REIL Rwy 10 and 28

NC-1, 31 DEC 2020 to 28 JAN 2021

NC-1, 31 DEC 2020 to 28 JAN 2021