

WAAS
CH **86321**
W30A

APP CRS
305°

Rwy Idg
TDZE
Apt Elev
7221
1180
1183

RNAV (GPS) RWY 30

SOUTHWEST MINNESOTA RGNL MARSHALL/RYAN FIELD (MML)

▼

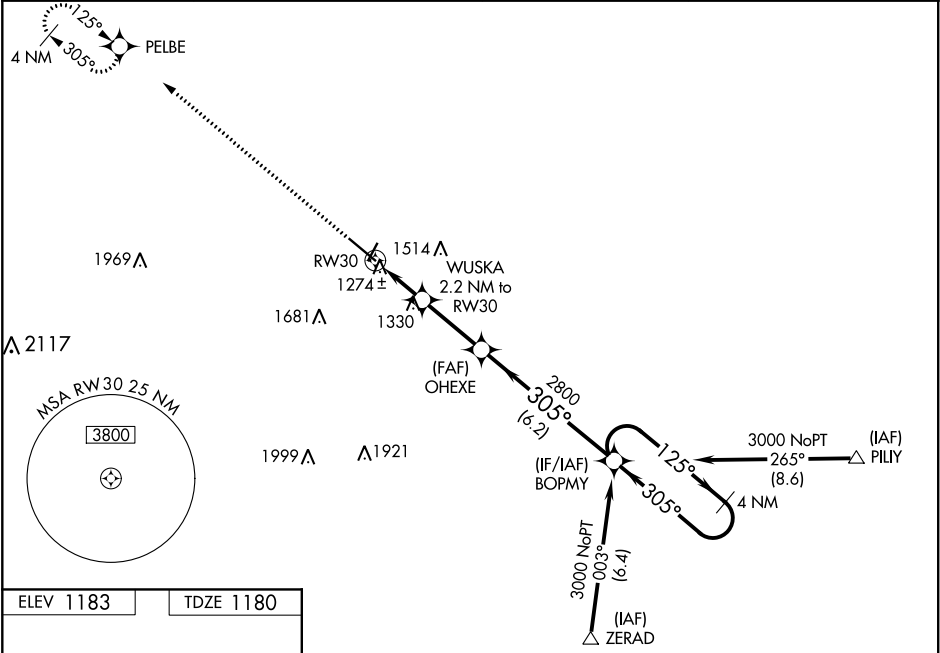
▲

For uncompensated Baro-VNAV systems, LNAV/VNAV NA below -17°C (2°F) or above 36°C (96°F). DME/DME RNP-0.3 NA. VDP NA with Tracy altimeter setting. When local altimeter setting not received, use Tracy altimeter setting and increase all DA 58 feet and all MDA 60 feet, and LPV visibility all Cats ¼ mile, LNAV/VNAV visibility all Cats ¼ mile, and LNAV Cat C and D visibility ¼ mile. Visibility reduction by helicopters NA. Baro-VNAV NA when using Tracy altimeter setting.

MALSF

MISSED APPROACH:
Climb to 3200 direct
PELBE and hold.

AWOS-3PT 120.150	MINNEAPOLIS CENTER 127.1 290.2	GCO 121.725	UNICOM 122.8 (CTAF) 0
----------------------------	--	-----------------------	---------------------------------



ELEV 1183

TDZE 1180

HIRL Rwy 12-30

REIL Rwy 2 and 20

MIRL Rwy 2-20

3200	PELBE	VGSI and RNAV glidepath not coincident. (VGSI angle 3.00/TCH 32)	BOPMY	4 NM Holding Pattern
*LNAV only	WUSKA 2.2 NM to RW30	OHEXE 2800	125°	3000
1.2 NM to RW30	1900	305°	305°	GP 3.00° TCH 40
1.2 NM	1 NM	2.8 NM	6.2 NM	
CATEGORY	A	B	C	D
LPV DA	1430-7/8 250 (300-7/8)			
LNAV/VNAV DA	1464-1 284 (300-1)			
LNAV MDA	1580-1 400 (400-1)		1580-1 1/8 400 (400-1 1/8)	
CIRCLING	1640-1 457 (500-1)		1640-1 1/2 1740-2 457 (500-1 1/2) 557 (600-2)	