

LOC I-GBY	APP CRS	Rwy Idg	7221
109.7	125°	TDZE	1182
		Apt Elev	1182

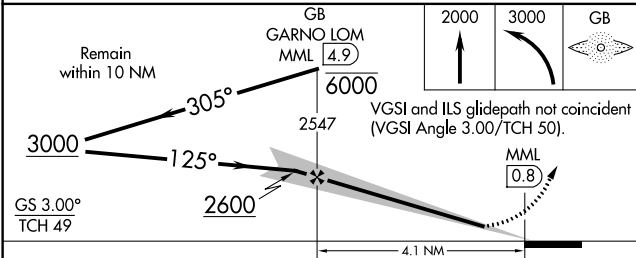
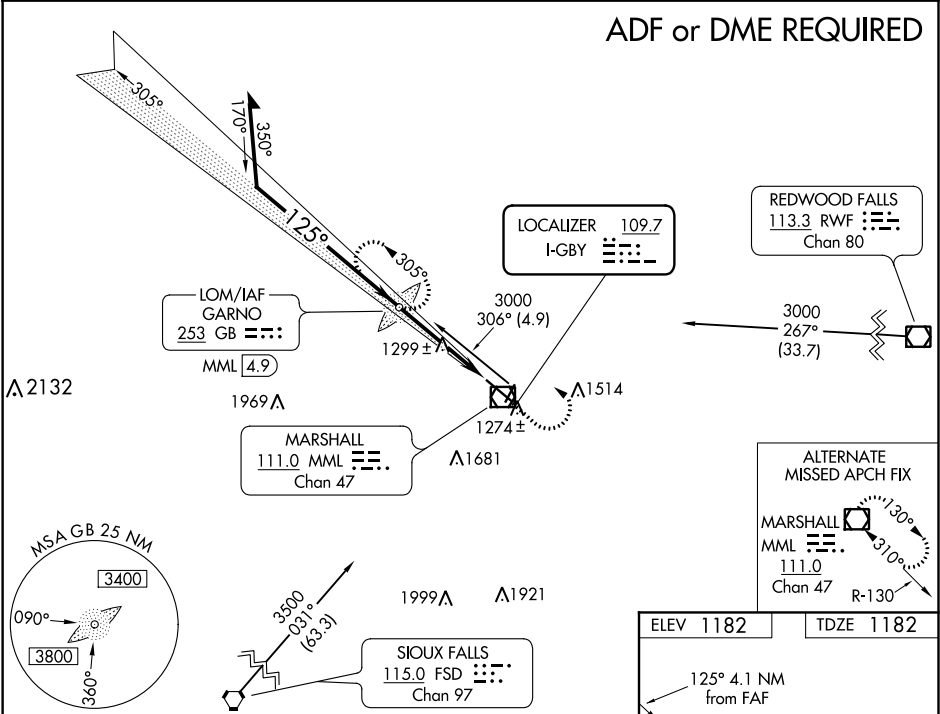
SOUTHWEST MINNESOTA RGNL MARSHALL/RYAN FIELD (MML) **ILS or LOC RWY 12**

**ADF required.**  
When local altimeter setting not received, use Tracy Muni alimeter setting and increase all DAs/MDAs 60 feet and S-LOC 12 Cats C/D visibility ¼ mile.  
For inoperative MALSR when using Tracy Muni altimeter setting, increase S-ILS 12 visibility to 1 mile all Cats.

**MALSR**

**MISSED APPROACH:** Climb to 2000 then climbing left turn to 3000 direct GARNO LOM/MML 4.9 DME and hold.

AWOS-3PT 120.150	MINNEAPOLIS CENTER 127.1 290.2	GCO 121.725	UNICOM 122.8 (CTAF) <b>0</b>
---------------------	-----------------------------------	----------------	---------------------------------



CATEGORY	A	B	C	D
S-ILS 12		1382-½	200 (200-½)	
S-LOC 12		1560-½	378 (400-½)	1560-¾ 378 (400-¾)
CIRCLING	1640-1	458 (500-1)	1640-1½ 458 (500-1½)	1740-2 558 (600-2)

ELEV 1182	TDZE 1182
125° 4.1 NM from FAF	
7221 X 100	
3000 X 15	
200 X 30	
HIRL Rwy 12-30 <b>0</b>	
REIL Rwy 2 and 20 <b>0</b>	
MIRL Rwy 2-20 <b>0</b>	
FAF to MAP 4.1 NM	
Knots	60 90 120 150 180
Min:Sec	4:06 2:44 2:03 1:38 1:22

NC-1, 31 DEC 2020 to 28 JAN 2021

NC-1, 31 DEC 2020 to 28 JAN 2021