

WAAS CH <b>99404</b> <b>W34A</b>	APP CRS <b>342°</b>	Rwy Idg TDZE <b>1060</b> Apt Elev <b>1060</b>
--	------------------------	---

RNAV (GPS) RWY 34

ROSEAU MUNI/RUDY BILLBERG FIELD (R.O.X)

⚠

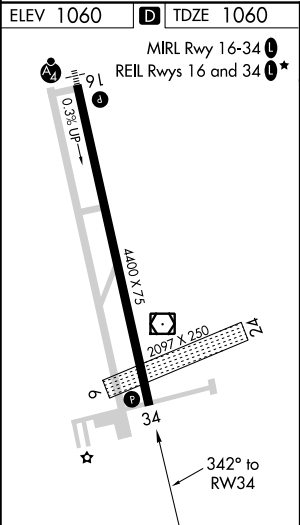
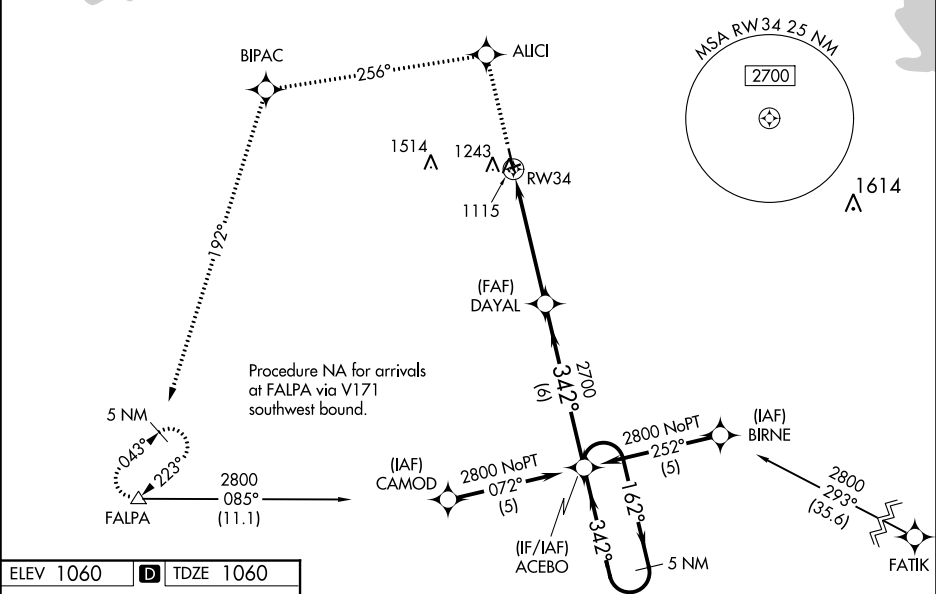
⚠

⚠

If local altimeter setting not received, use Warroad altimeter setting and increase all DAs 36 feet/MDAs 40 feet.  
VDP NA when using Warroad altimeter setting.  
Baro-VNAV NA when using Warroad altimeter setting.  
For uncompensated Baro-VNAV systems, LNAV/VNAV NA below -17°C (2°F) or above 46°C (114°F).  
Visibility reduction by helicopters NA. DME/DME RNP-0.3 NA.

MISSED APPROACH: Climb to 2900 direct AUCI and via 256° track to BIPAC and 192° track to FALPA and hold.

AWOS-3 <b>108.8</b>	MINNEAPOLIS CENTER <b>134.75 251.1</b>	UNICOM <b>122.8 (CTAF)</b> <b>0</b>
------------------------	---	--



2900	AUCI	256° tr	BIPAC	192° tr	FALPA	VGSI and RNAV glidepath not coincident (VGSI Angle 3.00°/TCH 44).
						5 NM Holding Pattern
*LNAV only.						
*1.5 NM to RW34						
DAYAL						
RW34						
ACEBO						
162° → 2800						
← 342°						
GP 3.00° TCH 40						
CATEGORY	A	B	C	D		
LPV DA	1310-1		250 (300-1)			
LNAV/VNAV DA	1485-1½		425 (500-1½)			
LNAV MDA	1560-1	500 (500-1)	1560-1¼ 500 (500-1¼)	1560-1½ 500 (500-1½)		
CIRCLING	1600-1	540 (600-1)	1600-1½ 540 (600-1½)	1640-2 580 (600-2)		