

VOR/DME MOX	APP CRS	Rwy Idg	4002
109.6	315°	TDZE	1131
Chan 33		Apt Elev	1136

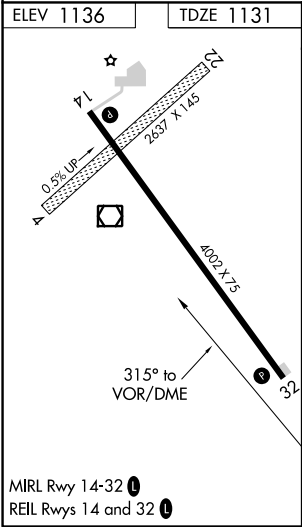
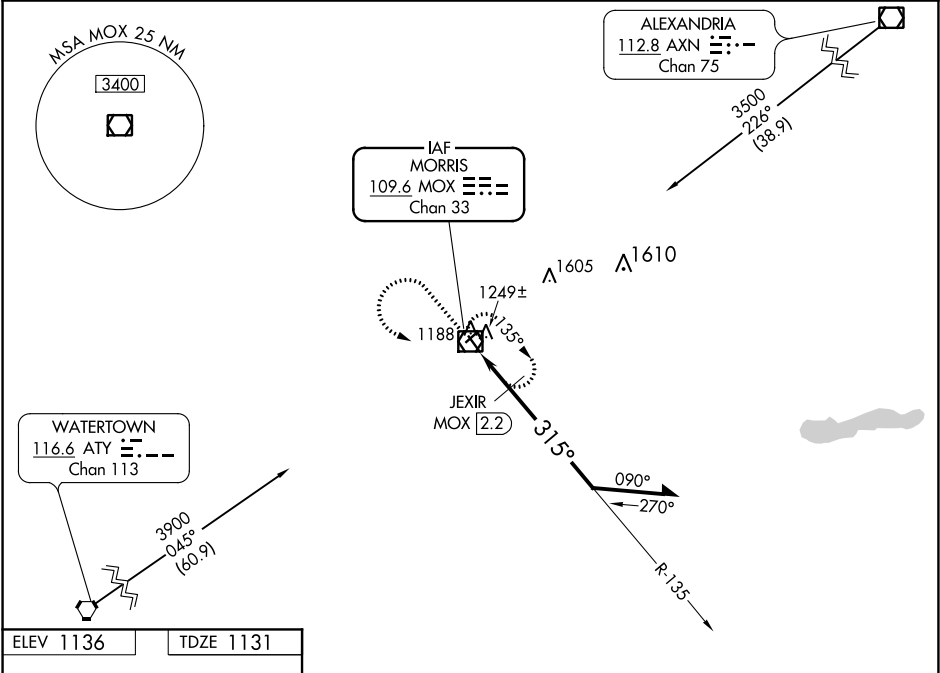
VOR RWY 32

MORRIS MUNI-CHARLIE SCHMIDT FIELD (MOX)

⚠ NA Circling NA to Rwy 4 and 22. VDP NA when using Benson altimeter setting. When local altimeter setting not received, use Benson altimeter setting and increase all MDAs 60 feet and S-32 Cat C visibility 1/8 SM increase Circling Cat C visibility 1/4 SM, JEXIR Fix minimums S-32 and Circling Cat C visibility 1/4 SM.

MISSED APPROACH: Climb to 3000 then left turn direct MOX VOR/DME and hold.

AWOS-3 109.6	MINNEAPOLIS CENTER 126.1 269.2	UNICOM 122.8 (CTAF) 0
-----------------	-----------------------------------	--------------------------



3000	MOX	MOX VOR/DME	VGSI and descent angles not coincident (VGSI Angle 3.00/TCH 42).	Remain within 10 NM
315°	MOX 1.5	JEXIR MOX 2.2	135°	2800
*1780 when using Benson altimeter setting.	3.04°	TCH 48	315°	*1720
1.1 NM	0.7 NM			
CATEGORY	A	B	C	D
S-32	1720-1	589 (600-1)	1720-1 3/4 589 (600-1 3/4)	NA
CIRCLING	1720-1	584 (600-1)	1860-2 724 (800-2)	NA
JEXIR FIX MINIMUMS				
S-32	1500-1	369 (400-1)		NA
CIRCLING	1560-1 424 (500-1)	1600-1 464 (500-1)	1860-2 724 (800-2)	NA

NC-1, 31 DEC 2020 to 28 JAN 2021

NC-1, 31 DEC 2020 to 28 JAN 2021