

WAAS CH 58030 W14A	APP CRS 141°	Rwy Idg 3999 TDZE 1034 Apt Elev 1035
--	------------------------	---

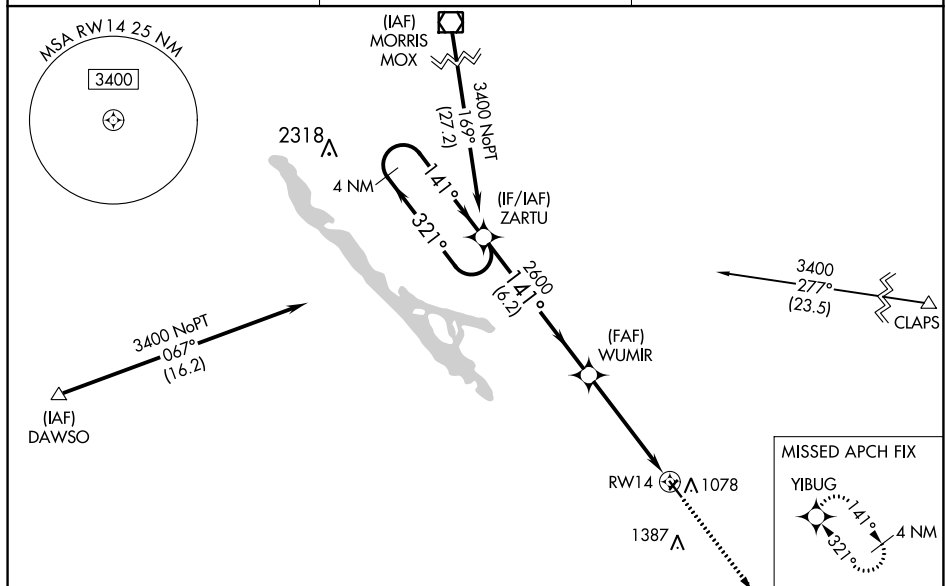
RNAV (GPS) RWY 14

MONTEVIDEO-CHIPPEWA COUNTY (MVE)

▼ Baro-VNAV NA when using Granite Falls altimeter setting. For uncompensated Baro-VNAV systems, LNAV/VNAV NA below -30°C (-22°F) or above 54°C (130°F). When local altimeter setting not received, use Granite Falls altimeter setting and increase all DA 36 feet and MDA 40 feet, increase LNAV Cats C and D visibility $\frac{1}{8}$ mile and Circling Cat D visibility $\frac{1}{4}$ mile. DME/DME RNP-0.3 NA. Helicopter visibility reduction below 1 SM NA. When VGSI inop, Straight-in and Circling Rwy 14 procedures NA at night. Circling to Rwy 3-21 NA.

MISSED APPROACH.
Climb to 3300 direct
YIBUG and hold.

AWOS-3 111.6	MINNEAPOLIS CENTER 125.5 323.1	UNICOM 122.8 (CTAF) 0
------------------------	--	--



4 NM Holding Pattern

3400 ← 321°
141° →

ZARTU

WUMIR

2600

141°

2600

6.2 NM

4.8 NM

RW14

GP 3.00°
TCH 45

VGSI and RNAV glidepath not coincident
(VGSI Angle 3.00/TCH 25).

3300

YIBUG

ELEV 1035

TDZE 1034

141° to RW14

0.5% UP

2561 X 145

3999 X 75

0.4% UP

CATEGORY	A	B	C	D
LPV DA	1284-1 250 (300-1)			
LNAV/VNAV DA	1284-1 250 (300-1)			
LNAV MDA	1520-1 486 (500-1)		1520-1 3/8 486 (500-1 3/8)	
CIRCLING	1560-1 525 (600-1)		1560-1 1/2 525 (600-1 1/2)	1700-2 665 (700-2)

REIL Rwy 14 and 32

MIRL Rwy 14-32

RNAV (GPS) RWY 14