

WAAS CH 86627 W30A	APP CRS 302°	Rwy Idg 5500 TDZE 1145 Apt Elev 1145
--	------------------------	---

RNAV (GPS) RWY 30


OWATONNA DEGNER RGNL (OWA)

▼

▲

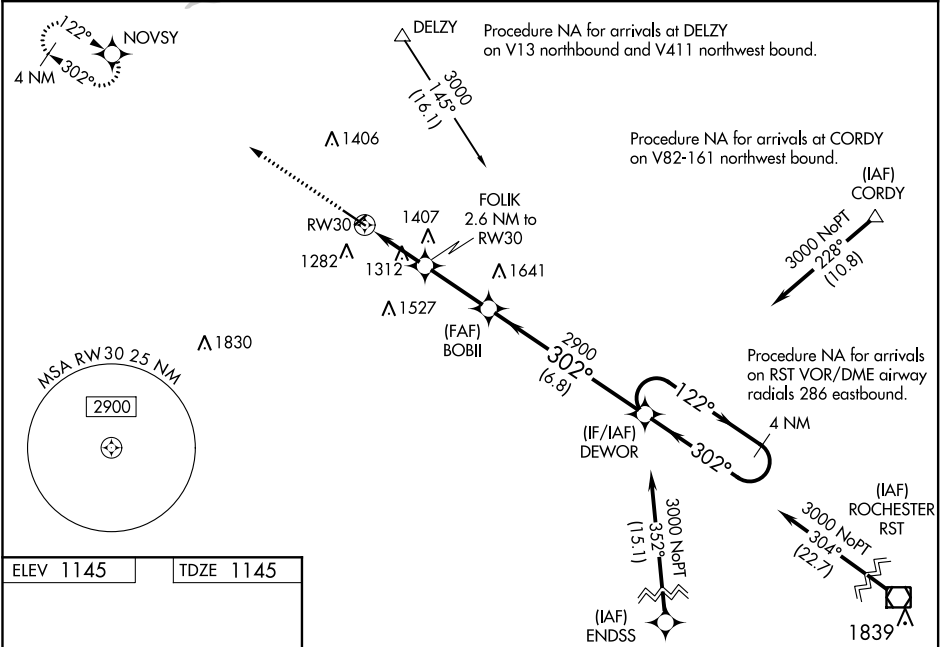
For uncompensated Baro-VNAV systems, LNAV/VNAV NA below -17°C (2°F) or above 54°C (130°F). DME/DME/RNP-0.3 NA. When local altimeter setting not received, use Fairbault altimeter setting and increase all DA 41 feet and all MDA 60 feet. Increase LNAV/VNAV all Cats visibility to 1½ mile, increase LNAV Cats C/D visibility to 1 mile, Cat C Circling visibility to 1¾ mile and Cat D visibility to 2½ mile. VDP and Baro-VNAV NA when using Fairbault altimeter setting. For inop MALSRS increase LNAV/VNAV all Cats visibility to 1¾ miles. For inop MALSRS, when using Fairbault altimeter setting, increase LNAV/VNAV all Cats visibility to 1½ mile, LNAV Cats C/D visibility to 1¾ mile.

MALSRS

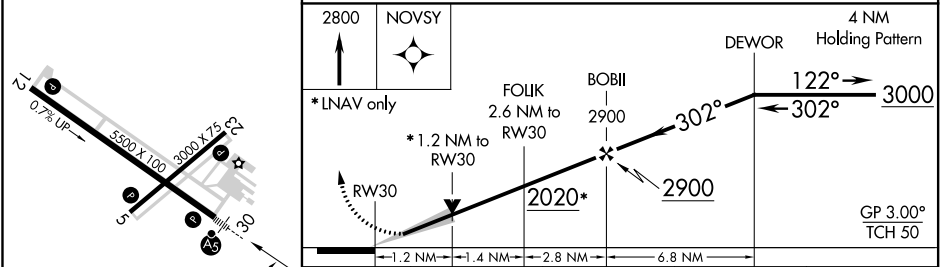





MISSED APPROACH:
Climb to 2800 direct
NOVSY and hold.


AWOS-3 128.325	ROCHESTER APP CON ★ 119.8 251.125	UNICOM 122.7 (CTAF) 
--------------------------	---	---



ELEV 1145	TDZE 1145
-----------	-----------



MIRL Rwy 5-23 
REIL Rwys 5, 12 and 23 
HIRL Rwy 12-30 

CATEGORY	A	B	C	D
LPV DA	1345-½		200 (200-½)	
LNAV/VNAV DA	1567-1		422 (500-1)	
LNAV MDA	1580-½	435 (500-½)	1580-¾	435 (500-¾)
 CIRCLING	1640-1	1700-1	1720-1½	1880-2¼
	495 (500-1)	555 (600-1)	575 (600-1½)	735 (800-2¼)