

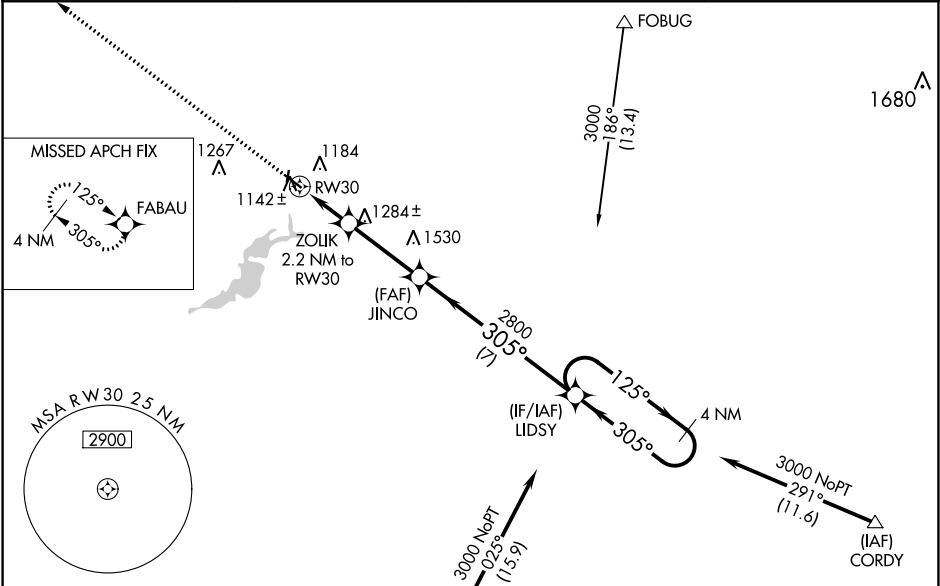
WAAS CH <b>61032</b> <b>W30A</b>	APP CRS <b>305°</b>	Rwy Idg TDZE <b>1056</b> Apt Elev <b>1060</b>
--	------------------------	---

RNAV (GPS) RWY 30  
FARIBAULT MUNI-LIZ WALL STROHFUS FIELD (F'BL)

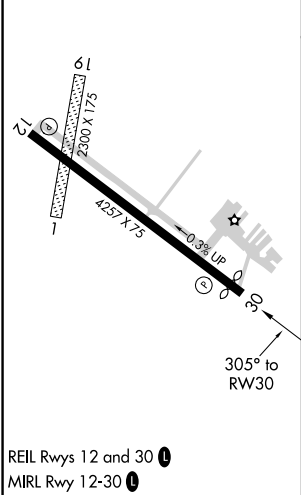
**⚠** For uncompensated Baro-VNAV systems, LNAV/VNAV NA below -17°C (2°F) or above 54°C (130°F). DME/DME RNP-0.3 NA. When local altimeter setting not received, use Owatonna altimeter setting and increase all DA 41 feet and all MDA 60 feet; increase LNAV Cat C visibility 1/8 mile. Baro-VNAV and VDP NA when using Owatonna altimeter setting. Circling NA to Rwy's 1 and 19.

MISSED APPROACH: Climb to 3000 direct FABAU and hold.

AWOS-3 <b>111.2</b>	MINNEAPOLIS APP CON <b>134.7 284.7</b>	GCO <b>121.725</b>	UNICOM <b>122.8 (CTAF)</b>
------------------------	---	-----------------------	-------------------------------



ELEV 1060	TDZE 1056
-----------	-----------



3000	FABAU	LIDSY				4 NM Holding Pattern
↑	✱					
* LNAV only		ZOLIK 2.2 NM to RW30	JINCO 2800	125° →		3000
		* 1 NM to RW30	305°	← 305°		
RW30		1780*	2800			GP 3.00° TCH 40
1 NM		1.2	3.2 NM	7 NM		
CATEGORY	A	B	C	D		
LPV DA	1306-1 250 (300-1)			NA		
LNAV/VNAV DA	1306-1 250 (300-1)			NA		
LNAV MDA	1400-1 344 (400-1)			NA		
CIRCLING	1520-1	460 (500-1)	1520-1½ 460 (500-1½)		NA	

NC-1, 31 DEC 2020 to 28 JAN 2021

NC-1, 31 DEC 2020 to 28 JAN 2021