

VOR/DME FFM
110.4
Chan **41**

APP CRS
115°

Rwy Idg
TDZE **1182**
Apt Elev **1183**

VOR RWY 13

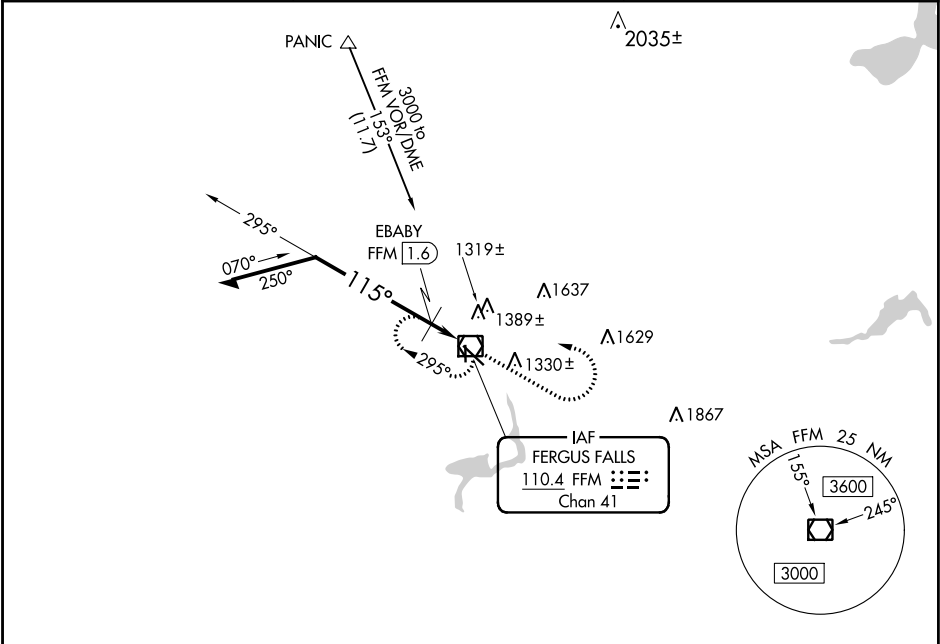
FERGUS FALLS MUNI-EINAR MICKELSON FIELD (FFM)

NA

Cat D straight-in minima NA when using Wheaton altimeter setting. When local altimeter setting not received, use Wheaton altimeter setting and increase all MDA 120 feet, and S-13 Cat C and D visibility ¼ mile, Circling Cat C and D visibility ½ mile, increase EBABY fix minimums S-13 and Circling Cat C and D visibility ½ mile.

MISSED APPROACH: Climb to 3000 then left turn direct FFM VOR/DME and hold.

| | | |
|------------------------|--|---------------------------------|
| AWOS-3 110.4 | MINNEAPOLIS CENTER 126.1 269.2 | UNICOM 122.8 (CTAF) 0 |
|------------------------|--|---------------------------------|



VGSI and descent angles not coincident (VGSI Angle 3.00/TCH 52).

Remain within 10 NM

2900

295°

115°

*1640

EBABY FFM 1.6

2.75°

TCH 50

1.6 NM

3000

VOR/DME

FFM

*1760 when using Wheaton altimeter setting.

| CATEGORY | A | B | C | D |
|--------------------|-----------------------|-----------------------|-------------------------|-------------------------|
| S-13 | 1640-1 | 458 (500-1) | 1640-1¼ 458 (500-1¼) | 1640-1½ 458 (500-1½) |
| CIRCLING | 1640-1 457 (500-1) | 1740-1 557 (600-1) | 1740-1½ 557 (600-1½) | 1880-2¼ 697 (700-2¼) |
| EBABY FIX MINIMUMS | | | | |
| S-13 | 1580-1 | 398 (400-1) | 1580-1¼ 398 (400-1¼) | |
| CIRCLING | 1640-1 457 (500-1) | 1740-1 557 (600-1) | 1740-1½ 557 (600-1½) | 1880-2¼ 697 (700-2¼) |

ELEV 1183

TDZE 1182

115° to VOR/DME

301 X 75

0.83° UP

35

3039 X 100

31

REIL Rwy 13 and 35 0

MRL Rwy 13-31 and 17-35 0