

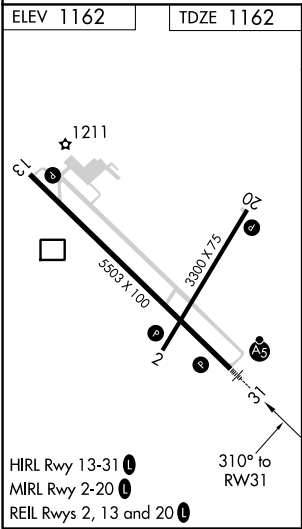
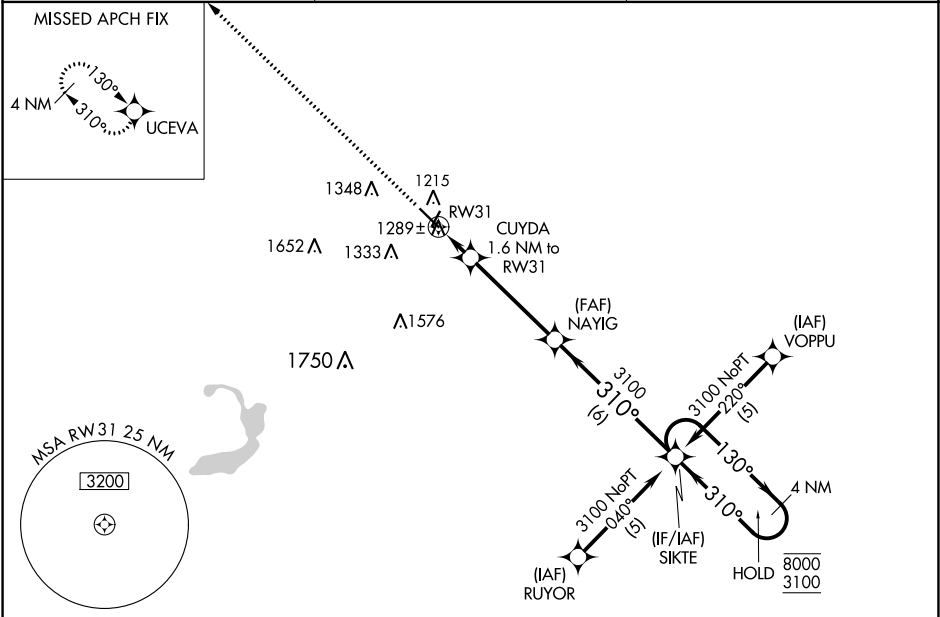
WAAS CH 90412 W31A	APP CRS 310°	Rwy Idg TDZE 1162 Apt Elev 1162	5503
--	------------------------	---	-------------

RNAV (GPS) RWY 31

FAIRMONT MUNI (FRM)

RNP APCH. ▼ For uncompensated Baro-VNAV systems, procedure NA below -17° C or above 54°C. For inop ALS, increase LPV all Cats visibility to ¾ SM and LNAV/VNAV all Cats visibility to 1½ SM and LNAV Cat C/D visibility to 1½ SM.	MALSR A5	MISSED APPROACH: Climb to 3100 direct UCEVA and hold.
--	-------------	---

AWOS-3PT 120.025	MINNEAPOLIS CENTER 127.75 257.7	UNICOM 122.8 (CTAF) 1
----------------------------	---	---------------------------------



3100 UCEVA	VGSi and RNAV glidepath not coincident (VGSi Angle 3.00/TCH 40).			
*LNAV only	CUYDA 1.6 NM to RW31	NAYIG 3100	SIKTE 4 NM Holding Pattern	
	1.6 NM	4.2 NM	6 NM	
1720*		310°	130°	8000 3100
		3100	310°	GP 3.00° TCH 59
CATEGORY	A	B	C	D
LPV DA	1467-½ 305 (400-½)			
LNAV/VNAV DA	1581-1 419 (500-1)			
LNAV MDA	1560-½ 398 (400-½)	1560-5⁄8 398 (400-5⁄8)	1560-1 398 (400-1)	
CIRCLING	1640-1 478 (500-1)	1660-1 498 (500-1)	1980-2¼ 818 (900-2¼)	1980-2½ 818 (900-2½)