

|             |         |          |      |
|-------------|---------|----------|------|
| VOR/DME DVL | APP CRS | Rwy Idg  | 4314 |
| 111.0       | 030°    | TDZE     | 1450 |
| Chan 47     |         | Apt Elev | 1470 |

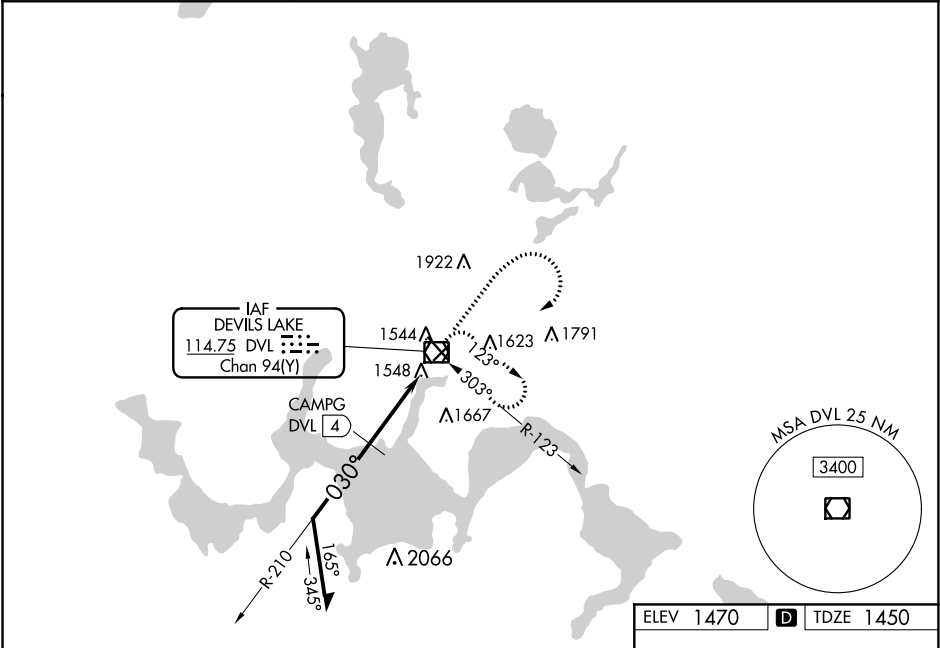
VOR RWY 3

DEVILS LAKE RGNL (DVL)

When local altimeter setting not received, use Cando altimeter setting and increase all MDA 80 feet, increase S-3 Cat A and Circling Cats C/D visibility ¼ SM, CAMPG fix minimums S-3 Cats C/D visibility ¾ SM and Circling Cats C/D visibility ¼ SM. Helicopter visibility reduction below 1 SM NA.

MISSED APPROACH: Climb to 3000 then climbing right turn to 3500 direct DVL VOR/DME and hold.

|                     |                                   |                          |
|---------------------|-----------------------------------|--------------------------|
| AWOS-3PT<br>125.875 | MINNEAPOLIS CENTER<br>124.2 270.3 | UNICOM<br>122.8 (CTAF) 0 |
|---------------------|-----------------------------------|--------------------------|



Remain within 10 NM

3300

210°

030°

CAMPG DVL 4

\*2320

4 NM

DVL VOR/DME

3000

3500

DVL

\*2400 when using Cando altimeter setting.

| CATEGORY           | A                       | B                       | C                       | D                       |
|--------------------|-------------------------|-------------------------|-------------------------|-------------------------|
| S-3                | 2320-1<br>870 (900-1)   | 2320-1¼<br>870 (900-1¼) | 2320-2½<br>870 (900-2½) | 870 (900-2½)            |
| CIRCLING           | 2320-1¼<br>850 (900-1¼) | 850 (900-1¼)            | 2320-2½<br>850 (900-2½) | 2320-2¾<br>850 (900-2¾) |
| CAMPG FIX MINIMUMS |                         |                         |                         |                         |
| S-3                | 1820-1 370 (400-1)      |                         |                         |                         |
| CIRCLING           | 2000-1 530 (600-1)      |                         | 2240-2¼<br>770 (800-2¼) | 2240-2½<br>770 (800-2½) |

