


WAAS CH <b>58314</b> <b>W31A</b>	APP CRS <b>311°</b>	Rwy ldg TDZE Apt Elev	<b>6401</b> <b>1450</b> <b>1470</b>
--	------------------------	-----------------------------	---

RNAV (GPS) RWY 31

DEVILS LAKE RGNL (DVL)

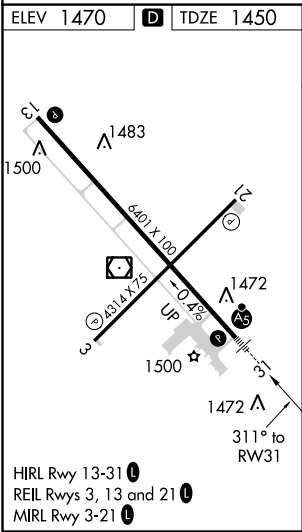
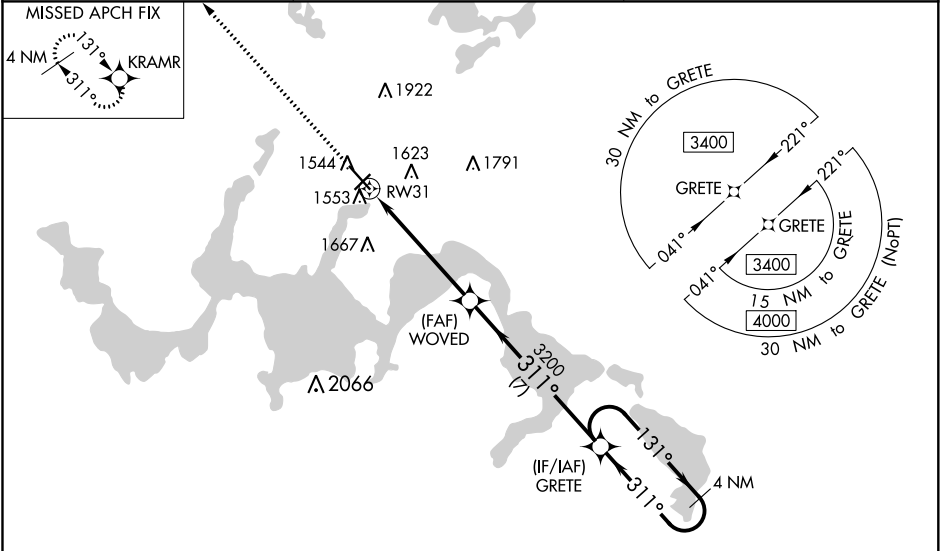
For uncompensated Baro-VNAV systems, LNAV/VNAV NA below -17°C (2°F) or above 54°C (130°F). DME/DME RNP-0.3 NA. Baro-VNAV and VDP NA when using Cando altimeter setting. For inop MALSR, increase LNAV/VNAV all Cats visibility to ¾, LNAV Cats C and D visibility to 1 mile. When local altimeter setting not received, use Cando altimeter setting and increase all DA 63 feet, and all MDA 80 feet, increase LNAV/VNAV all Cats visibility ¼ mile, LNAV and Circling Cats C and D visibility ¼ mile. For inop MALSR when using Cando altimeter setting, increase LPV all Cats visibility to ¾ mile.

MALSR




MISSED APPROACH:  
Climb to 3400 direct  
KRAMR and hold.


AWOS-3PT <b>125.875</b>	MINNEAPOLIS CENTER <b>124.2 270.3</b>	UNICOM <b>122.8 (CTAF) 0</b>
----------------------------	--	---------------------------------



3400 KRAMR




\*LNAV only.



GRETE

4 NM Holding Pattern



WOVED

3200

311°

3200

3400

GP 3.00° TCH 44

CATEGORY	A	B	C	D
LPV DA	1650-½		200 (200-½)	
LNAV/VNAV DA	1721-½		271 (300-½)	
LNAV MDA	1820-½ 370 (400-½)		1820-⅝ 370 (400-⅝)	
CIRCLING	2000-1 530 (600-1)		2240-2¼ 770 (800-2¼) 2240-2½ 770 (800-2½)	