

WAAS CH 78314 W13A	APP CRS 131°	Rwy Idg 6401 TDZE 1470 Apt Elev 1470
--	------------------------	---

RNAV (GPS) RWY 13

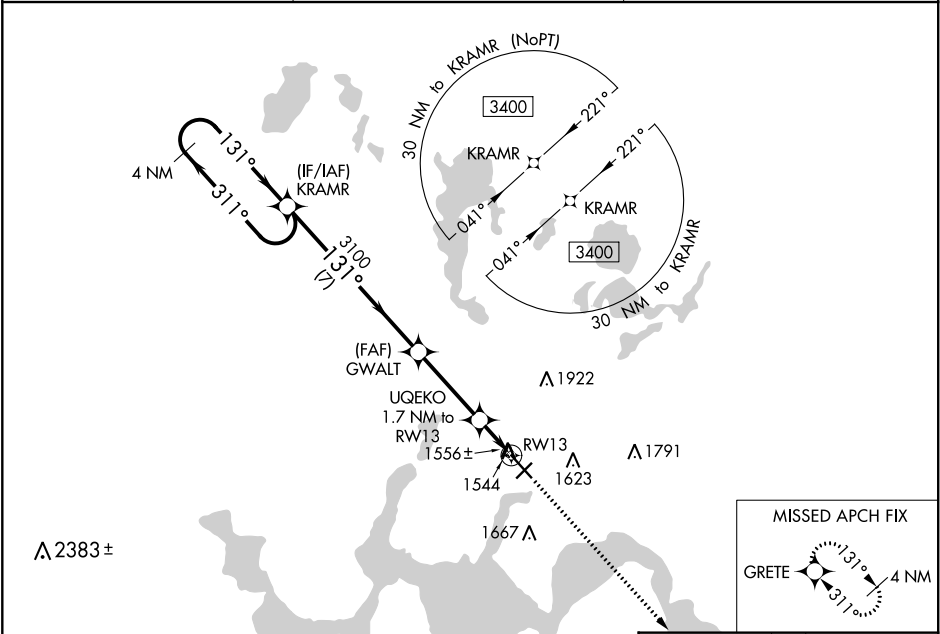
DEVILS LAKE RGNL (DVL)

⚠

For uncompensated Baro-VNAV systems, LNAV/VNAV NA below -17°C (2°F) or above 54°C (130°F). DME/DME RNP-0.3 NA. Baro-VNAV and VDP NA when using Cando altimeter setting. When local altimeter setting not received, use Cando altimeter setting and increase all DA 63 feet and all MDA 80 feet, increase LPV and LNAV/VNAV all. Cats visibility ¼ mile, LNAV and Circling Cats C and D visibility ¼ mile.

MISSED APPROACH: Climb to 3400 direct GRETE and hold.

AWOS-3PT 125.875	MINNEAPOLIS CENTER 124.2 270.3	UNICOM 122.8 (CTAF)
----------------------------	--	-------------------------------



4 NM Holding Pattern

VGSI and RNAV glidepath not coincident (VGSI Angle 3.00/TCH 45).

3400 GRETE

GP 3.00° TCH 50

7 NM 3.3 NM 0.8 NM 0.9 NM

*2060

*0.9 NM to RWY 13

*LNAV only.

CATEGORY	A	B	C	D
LPV DA	1720-3/4 250 (300-3/4)			
LNAV/VNAV DA	1791-1 321 (400-1)			
LNAV MDA	1820-1 350 (400-1)			
CIRCLING	2000-1 530 (600-1)	2240-2 1/4 770 (800-2 1/4)	2240-2 1/2 770 (800-2 1/2)	

HIRL Rwy 13-31

REIL Rws 3, 13, and 21

MIRL Rwy 3-21