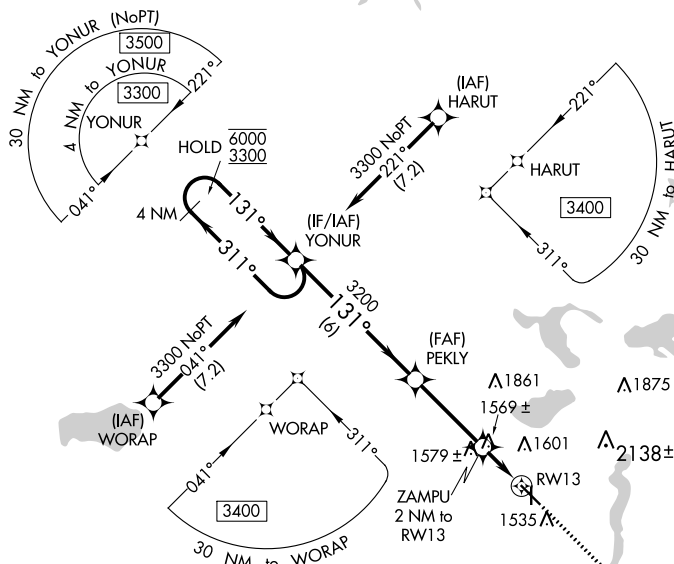


RNAV (GPS) RWY 13

PARK RAPIDS MUNI-KONSHOK FIELD (PKD)

MISSED APPROACH: Climb to 3200 direct ZUMLU and hold.

UNICOM
123.0 (CTAF) **L**



MISSED APCH FIX

131°

31°

4 NM

JMLU

Diagram illustrating a proposed driveway layout. The layout shows a main road (RW13) and a proposed driveway. The driveway is labeled with dimensions: 5497 X 100 and 3500 X 75. The angle between the driveway and RW13 is 131°. The driveway is shown as a solid line, and the area to be paved is indicated by a dashed line. The diagram also shows a proposed driveway width of 36' and a proposed driveway length of 81'.

4 NM Holding Pattern

YONUR

PEKLY

ZAMPU

2 NM to RW13

1 NM to RW13

1 NM

1 NM

6000

3300

311°

131°

131°

3200

3.00°

TCH 48

2120

RW13

3200

ZUMLU

CATEGORY	A	B	C	D
LP MDA	1820-1 375 (400-1)			
LNAV MDA	1840-1 395 (400-1)		1840-1½ 395 (400-1½)	
CIRCLING	1900-1 455 (500-1)	1980-1 535 (600-1)	2000-1½ 555 (600-1½)	2500-3 1055 (1100-3)

HIRL Rwy 13-31 **L**
MIRL Rwy 18-36 **L**
REIL Rwy 13, 18 and 36 **L**