

WAAS CH 58230 W11A	APP CRS 113°	Rwy Idg TDZE 1574 Apt Elev 1574
--	------------------------	---

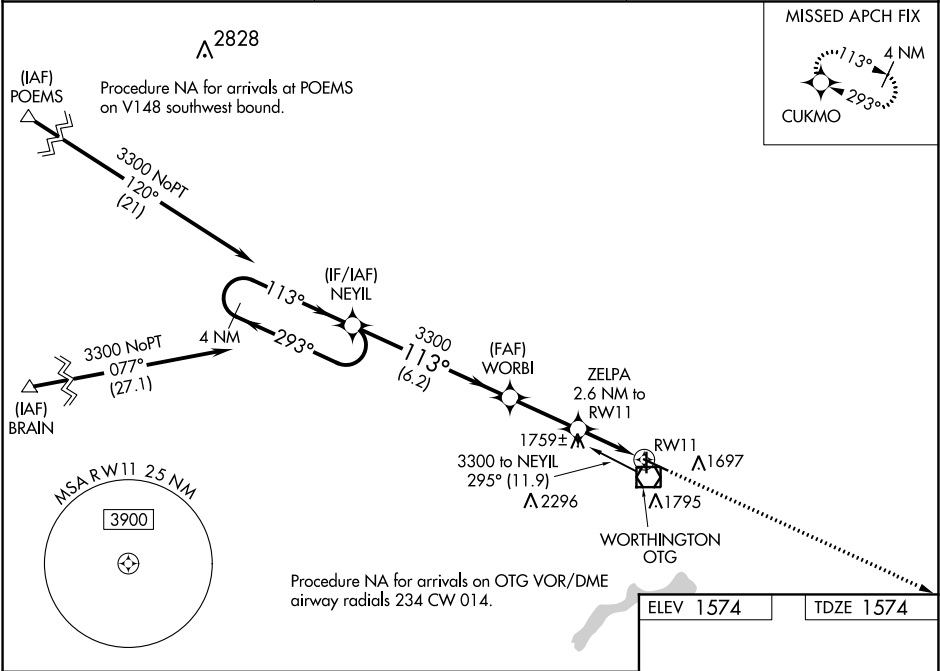
RNAV (GPS) RWY 11

WORTHINGTON MUNI (OTG)

⚠ Baro-VNAV NA when using Jackson altimeter setting. For uncompensated Baro-VNAV systems, LNAV/VNAV NA below -18°C (0°F) or above 54°C (130°F). When VGSi inop, Straight-in/Circling Rwy 11 procedure NA at night. DME/DME RNP-0.3 NA. Visibility reduction by helicopters NA. When local altimeter setting not received, use Jackson altimeter setting and increase all DA 78 feet, all MDA 80 feet, increase LPV and LNAV/VNAV all Cats and LNAV Cats C/D visibility ⅛ mile and Circling Cat C visibility ¼ mile.

MISSED APPROACH: Climb to 3300 direct CUKMO and hold.

AWOS-3PT 121.075	MINNEAPOLIS CENTER 132.05 317.4	UNICOM 122.8 (CTAF) 📶
----------------------------	---	--



4 NM Holding Pattern

NEYL

WORBI

3300

3300

293°

113°

113°

3300

ZELPA 2.6 NM to RW11

*2440

RW11

*LNAV only

3300

CUKMO

GP 3.00° TCH 42

6.2 NM

2.7 NM

2.6 NM

CATEGORY	A	B	C	D
LPV DA	1824-1		250 (300-1)	
LNAV/VNAV DA	1826-1		252 (300-1)	
LNAV MDA	2020-1 446 (500-1)		2020-1⅔ 446 (500-1⅔)	
CIRCLING	2100-1 526 (600-1)		2100-1½ 526 (600-1½) 2140-2 566 (600-2)	

81

113° to RW11

5500 X 100

4200 X 75

36

1629

MIRL Rwy 18-36 **📶**

HIRL Rwy 11-29 **📶**

REIL Rws 11, 18, and 36 **📶**