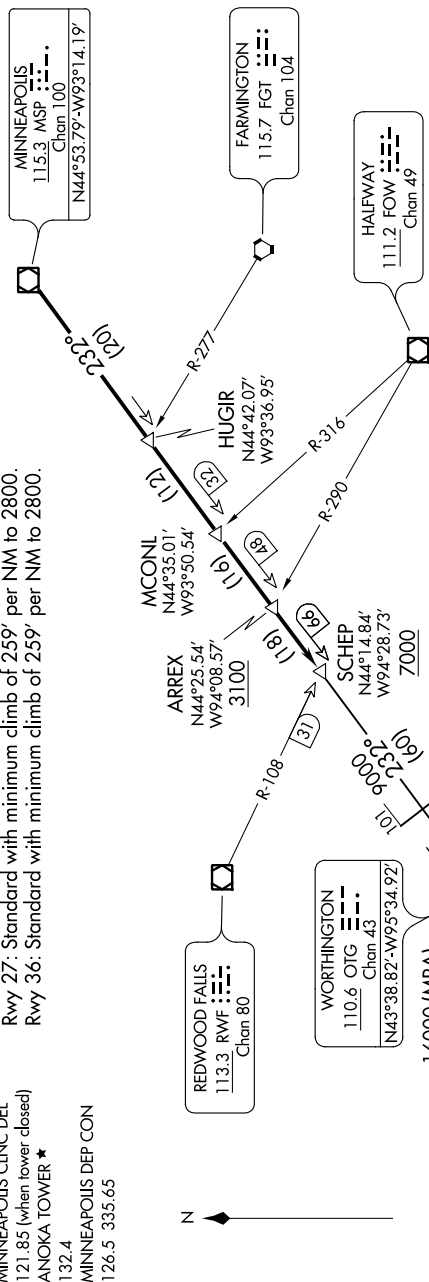


## TAKEOFF MINIMUMS

Rwy 9: Standard with minimum climb of 341' per NM to 3000.  
Rwy 18: Standard with minimum climb of 371' per NM to 3000.  
Rwy 27: Standard with minimum climb of 259' per NM to 2800.  
Rwy 36: Standard with minimum climb of 259' per NM to 2800.

132.4 MINNEAPOLIS DEP CON  
126.5 335.65

### TOP ALTITUDE: ASSIGNED BY ATC



NOTE: RADAR required.  
NOTE: Chart not to scale.

DEPARTURE ROUTE DESCRIPTION

**TAKEOFF ALL RUNWAYS:** Fly assigned heading and altitude for RADAR vectors to MSP VOR/DME then on MSP R-232 to SCHEP INT/MSP 66 DME, thence, . . . .  
 . . . . on transition or assigned route. Expect clearance to filed altitude/flight level 10 (ten) minutes after departure.

O'NEILL TRANSITION [SCHEP9,ONL]: From over SCHEP INT on MSP R-232 and OTG R-045 to OTG VOR/DME, then on OTG R-236 and ONL R-052 to ONL VORTAC.

NC-1, 31 DEC 2020 to 28 JAN 2021