

WAAS  
CH **70313**  
**W35A**

APP CRS  
**354°**

Rwy Idg  
TDZE **845**  
Apt Elev **845**

RNAV (GPS) RWY 35L

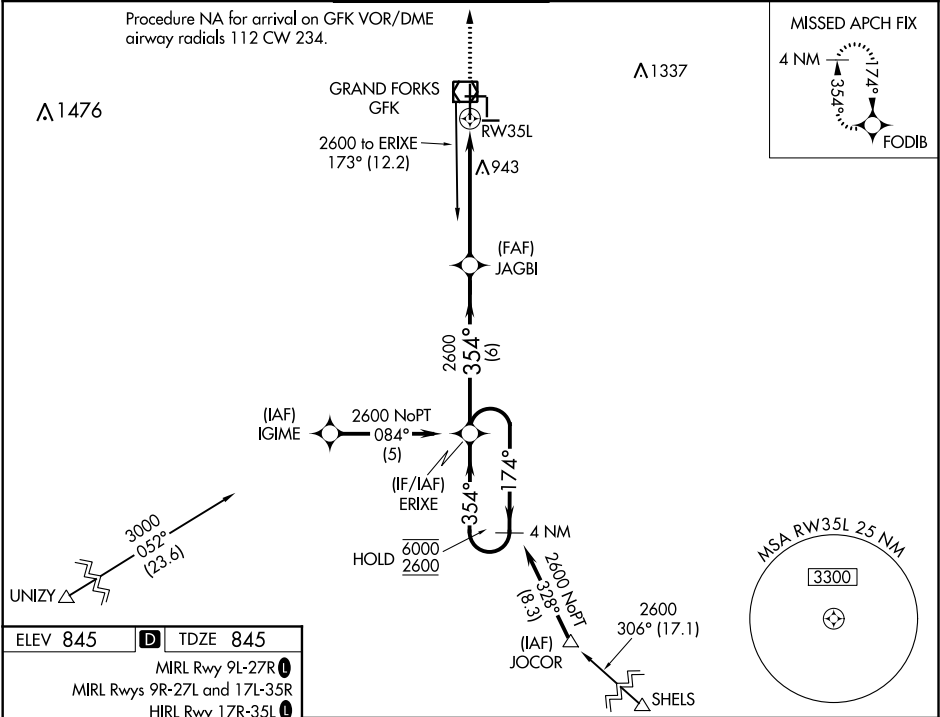
GRAND FORKS INTL (GFK)

RNP APCH.  
For uncompensated Baro-VNAV systems, LNAV/VNAV NA below -16°C or above 54°C. For Inop ALS, increase LNAV/VNAV Cat D visibility to RVR 5000 and LNAV Cat C/D visibility to RVR 5500.

MALSRR

MISSED APPROACH: Climb to 2600 direct FODIB and hold.

ATIS <b>119.4</b>	GRAND FORKS APP CON ★ <b>118.1 318.1</b>	GRAND FORKS TOWER★ <b>118.4 (CTAF) 350.35</b>	GND CON <b>124.575</b>	CLNC DEL <b>135.725</b>	UNICOM <b>122.95</b>
----------------------	---	--	---------------------------	----------------------------	-------------------------



ELEV 845 TDZE 845

MIRL Rwy 9L-27R

MIRL Rwy 9R-27L and 17L-35R

MIRL Rwy 17R-35L

REIL Rwy 17R and 27R

VGSI and RNAV glidepath not coincident (VGSI Angle 2.76/TCH 61).

4 NM Holding Pattern

ERIXE

JAGBI

2600

354°

174°

6000

2600

GP 3.00° TCH 55

6 NM

4.3 NM

1 NM

\*1 NM to RW35L

\*LNAV only

RW35L

CATEGORY	A	B	C	D
LPV DA	1095/24 250 (300-½)			
LNAV/VNAV DA	1174/26 329 (400-½)			1174/40 329 (400-¾)
LNAV MDA	1200/24	355 (400-½)	1200/30 355 (400-¾)	1200/50 355 (400-1)
CIRCLING	1280-1 435 (500-1)	1300-1 455 (500-1)	1400-1½ 555 (600-1½)	1400-2 555 (600-2)