

BEMIDJI, MINNESOTA

AL-5174 (FAA)

20030

WAAS CH 65917 W25A	APP CRS 253°	Rwy Idg 5700 TDZE 1389 Apt Elev 1391
--	------------------------	---

RNAV (GPS) RWY 25

BEMIDJI RGNL (BJI)

RNP APCH.

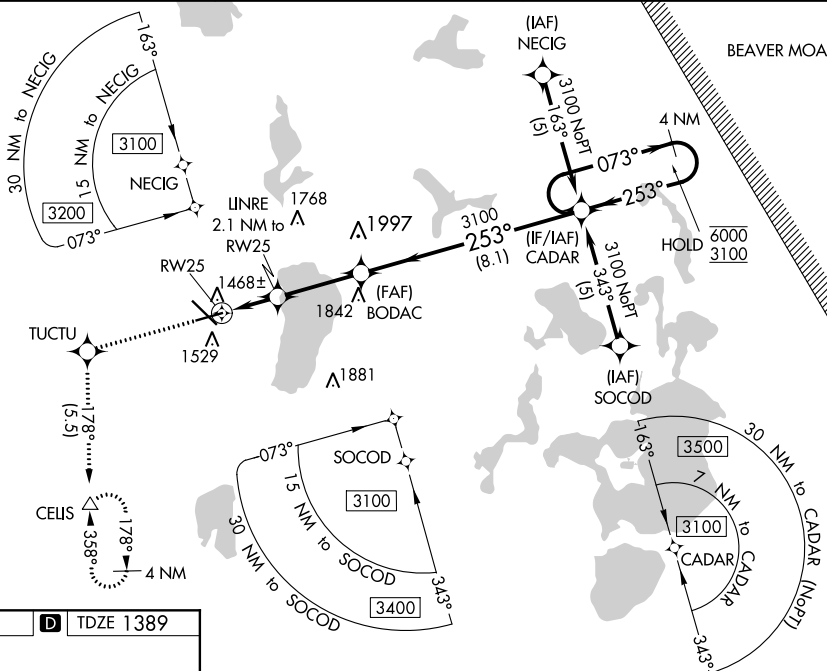


For uncompensated Baro-VNAV systems, LNAV/VNAV NA below -17°C or above 46°C.

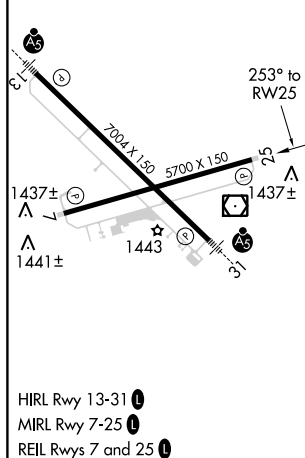
MISSED APPROACH:
Climb to 3400 direct
TUCTU and on track
178° to CELS and hold.

AWOS-3
119.275

MINNEAPOLIS CENTER
134.75 251.1

UNICOM
122.8 (CTAF) 

ELEV 1391	D	TDZE 1389
-----------	----------	-----------



BEMIDJI, MINNESOTA
Orig-C 30JAN20

47°31'N-94°56'W

BEMIDJI RG NL (BJI)

RNAV (GPS) RWY 25

NC-1, 31 DEC 2020 to 28 JAN 2021

NC-1, 31 DEC 2020 to 28 JAN 2021