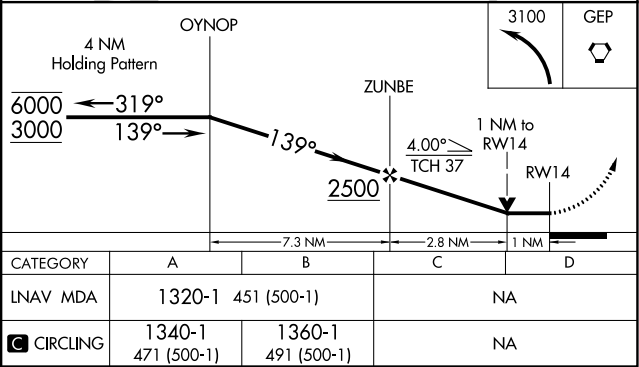
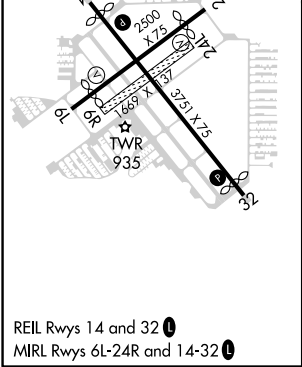
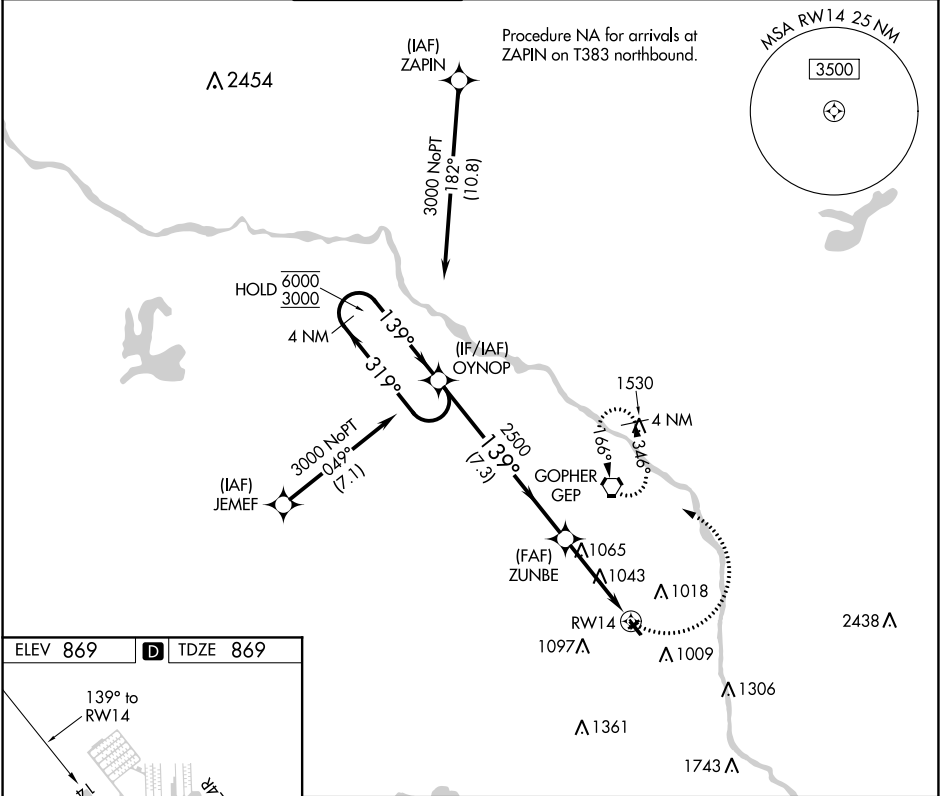


APP CRS	Rwy Idg	3508
139°	TDZE	869
	Apt Elev	869

RNAV (GPS) RWY 14

CRYSTAL (MIC)

RNP APCH.			MISSED APPROACH: Climbing left turn to 3100 direct GEP VORTAC and hold, continue climb-in-hold to 3100.			
⚠ Circling NA to Rwy 6R and 24L. Rwy 14 helicopter visibility reduction below ¾ SM NA.						
ATIS	MINNEAPOLIS APP CON	CRYSTAL TOWER ★	GND CON	CLNC DEL	CLNC DEL	UNICOM
124.475	126.5 335.65	120.7 (CTAF) 0	121.6	121.6	121.6 (When twr closed)	122.95



NC-1, 31 DEC 2020 to 28 JAN 2021

NC-1, 31 DEC 2020 to 28 JAN 2021