

| | | | |
|--|------------------------|-----------------------------|---|
| WAAS CH 61212 W13A | APP CRS 129° | Rwy Idg TDZE Apt Elev | 5500 2020 2032 |
|--|------------------------|-----------------------------|---|

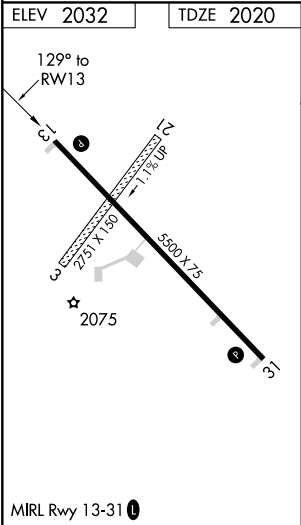
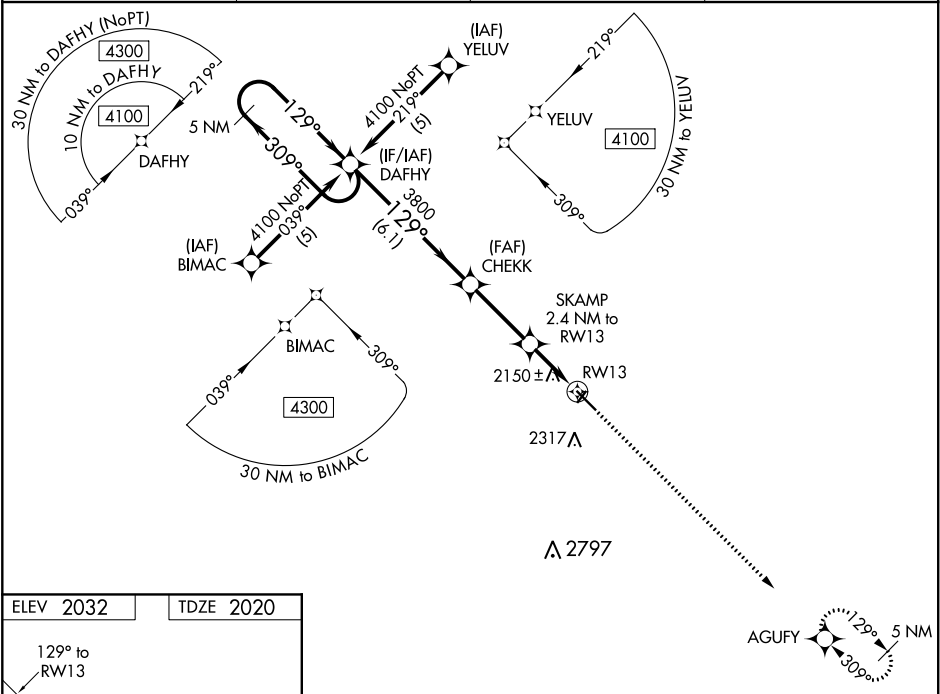
RNAV (GPS) RWY 13

WINNER RGNL (ICR)

DME/DME RNP-0.3 NA. For uncompensated Baro-VNAV systems, LNAV/VNAV NA below -19°C (-2°F) or above 54°C (130°F). Baro-VNAV and VDP NA when using Valentine altimeter setting. When local altimeter setting not received, use Valentine, NE altimeter setting and increase all DA/MDA 240 feet; increase LPV all Cats visibility ¾ mile, LNAV/VNAV all Cats visibility 1 mile, LNAV Cat C visibility ¾ mile, Circling Cat B visibility ¼ mile and Cat C visibility 1 mile. Circling NA to Rwy's 3 and 21.

MISSED APPROACH: Climb to 4100 direct AGUFY and hold.

| | | | |
|------------------------|--|-----------------------|---------------------------------|
| ASOS 126.775 | MINNEAPOLIS CENTER 125.1 269.1 | GCO 121.725 | UNICOM 122.8 (CTAF) 0 |
|------------------------|--|-----------------------|---------------------------------|



| | | | | | |
|---|-----------------------|-----------------------|-------------------------|-------------------------|-----------------|
| VGSI and RNAV glidepath not coincident. | | | | 4100 | AGUFY |
| 5 NM Holding Pattern | | | | DAFHY | CHECK |
| 4100 ← 309° → 129° → 3800 | | | | SKAMP 2.4 NM to RW13 | *LNNAV only |
| GP 3.00° TCH 38 | | | | *2800 | *1.4 NM to RW13 |
| | | | | 6.1 NM | 3 NM |
| | | | | 1 NM | 1.4 NM |
| CATEGORY | A | B | C | D | |
| LPV DA | 2270-1 | | 250 (300-1) | NA | |
| LNNAV/VNAV DA | 2456-1½ | | 436 (500-1½) | NA | |
| LNNAV MDA | 2480-1 | | 460 (500-1) | 2480-1¼ 460 (500-1¼) | NA |
| CIRCLING | 2580-1 548 (600-1) | 2680-1 648 (700-1) | 2680-1¾ 648 (700-1¾) | NA | |