

WAAS CH 42519 W10B	APP CRS 098°	Rwy Idg TDZE Apt Elev	5000 905 906
--	------------------------	-----------------------------	---

RNAV (GPS) RWY 10R

FLYING CLOUD (FCM)

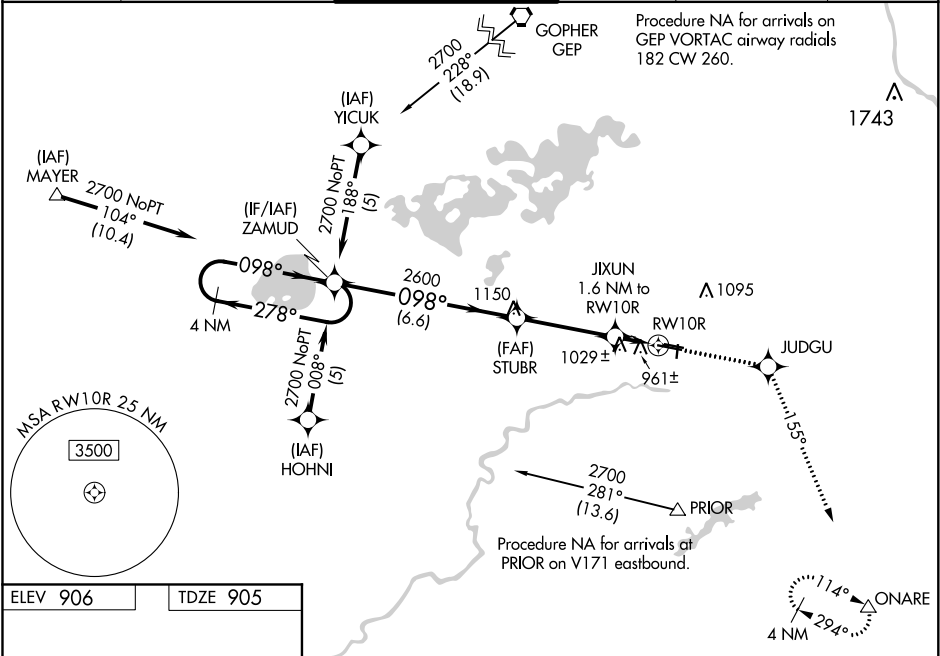
⚠

Baro-VNAV NA when using Minneapolis-St Paul Intl/Wold Chamberlain altimeter setting. For uncompensated Baro-VNAV systems, LNAV/VNAV NA below -16°C (4°F) or above 47°C (116°F). DME/DME RNP-0.3 NA. When local altimeter setting not received, use Minneapolis-St Paul Intl/Wold Chamberlain altimeter setting and increase all DA 34 feet and all MDA 40 feet and increase LNAV Cat C visibility ¼ mile. For inoperative MALSR increase LNAV Cat D visibility to 1¼. Night Landing: Rwy 18/36 NA.

MALSR

MISSED APPROACH:
Climb to 3000 direct JUDGU and on track 155° to ONARE and hold.

ATIS 124.9	MINNEAPOLIS APP CON 134.7 284.7	FLYING CLOUD TOWER ★ 119.15 (CTAF)	GND CON 121.7	CLNC DEL 121.7 (When twr closed)	UNICOM 122.95
----------------------	---	--	-------------------------	---	-------------------------



ELEV 906

TDZE 905

HIRL Rwy 10R-28L

REIL Rwys 10L, 28R

REIL Rwys 18, 28L, and 36

MIRL Rwys 10L-28R and 18-36

4 NM Holding Pattern			ZAMUD	3000 ↑	JUDGU ✦	fr 155°	ONARE △
2700 ← 278° 098° →			STUBR	2600	JIXUN 1.6 NM to RW10R	*LNAV only.	
GP 3.00° TCH 42			2600	*1440	RW10R		
			6.6 NM	3.6 NM	1.6		
CATEGORY	A	B	C	D			
LPV DA	1105-½ 200 (200-½)						
LNAV/ VNAV DA	1237-¾ 332 (400-¾)						
LNAV MDA	1280-½ 375 (400-½)					1280-1 375 (400-1)	
CIRCLING	1320-1 414 (500-1)	1440-1 534 (600-1)	1440-1½ 534 (600-1½)	1540-2 634 (700-2)			