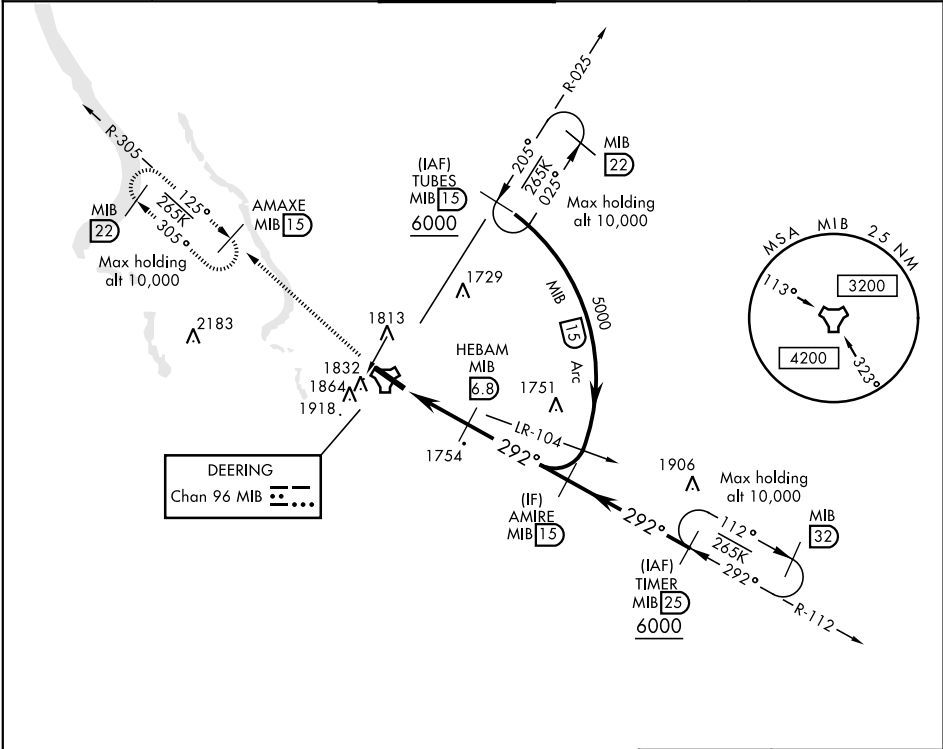
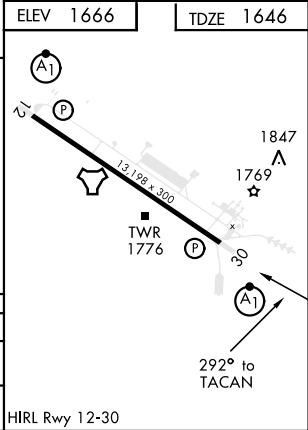
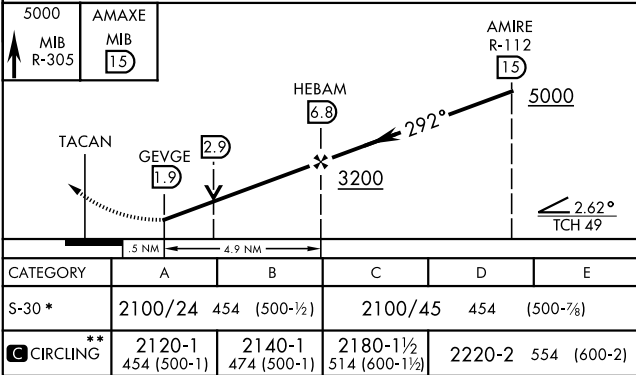


TACAN Y RWY 30

TACAN MIB Chan <b>96</b>	APCH CRS <b>292°</b>	Rwy ldg <b>13,198</b> TDZE <b>1646</b> Arprt Elev <b>1666</b>	AL-5013 [USAF]	MINOT AFB (KMIB)
* When ALS inop, increase CAT AB RVR to 55 and vis to 1 mile, CAT CDE vis to 1 3/8 miles. ** Circling not authorized N of Rwy 12-30			ALSF-1 	MISSED APPROACH: Climb to 5000 via MIB TACAN R-305 direct AMAXE and hold.
ATIS ★ <b>278.8</b>	MINOT APP CON <b>119.6 363.8</b>	MINOT TOWER ★ <b>120.65 253.5</b>	GND CON <b>134.0 275.8</b>	CLNC DEL <b>326.2</b>



EMERG SAFE ALT 100 NM 4700



TACAN Y RWY 30

NC-1, 31 DEC 2020 to 28 JAN 2021

NC-1, 31 DEC 2020 to 28 JAN 2021