

HI-TACAN Z RWY 30

Rwy Idg	13,198
TDZE	1646
Arpt Elev	1666

JAL-5013 [USAF]

MINOT AFB (KMIB)

* When ALS inop, increase CAT CDE vis to 1 3/8 miles.

** Circling not authorized N of Rwy 12-30.

ALSF-1

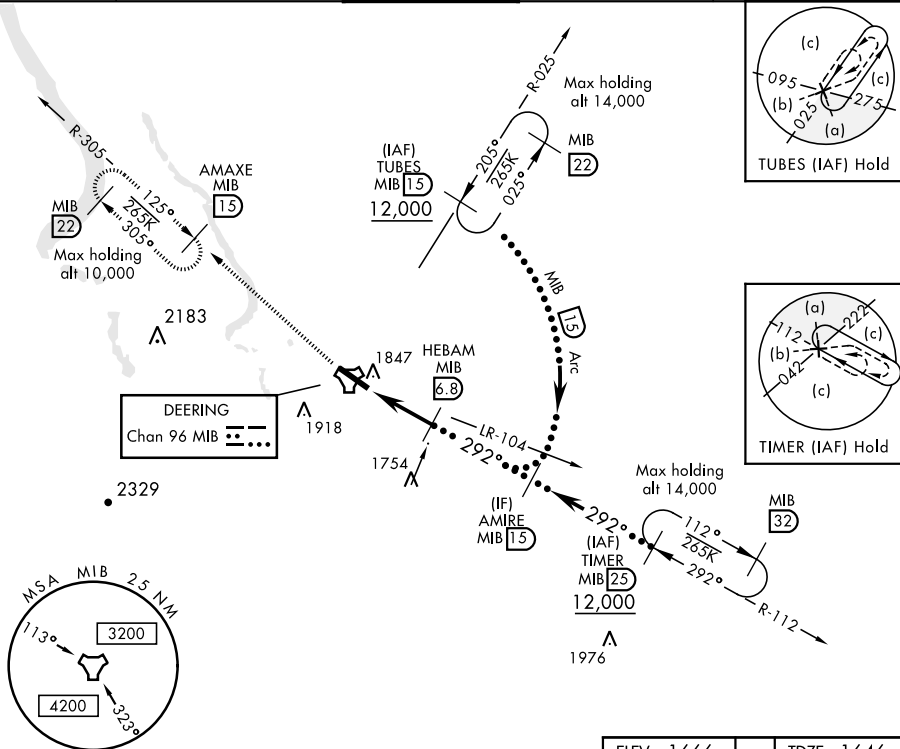
MISSED APPROACH: Climb to 5000 via
MIB TACAN R-305 direct AMAXE and hold.

ATIS ★
278.8

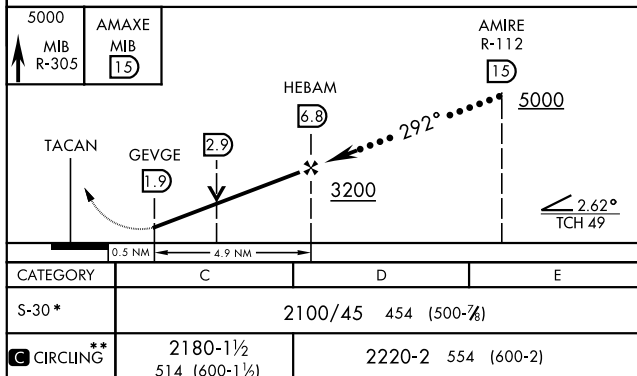
MINOT APP CON
119.6 363.8

MINOT TOWER ★
120.65 253.5

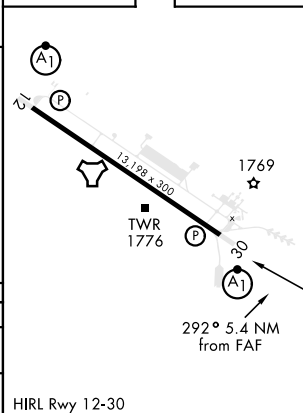
GND CON
134.0 275.8

CLNC DEL
326.2

EMERG SAFE ALT 100 NM 4700



ELEV	1666		TDZE	1646
------	------	--	------	------



MINOT, NORTH DAKOTA

48°25'N-101°21'W

MINOT AFB (KMIB)

Orig 21JUL16

HI-TACAN Z RWY 30

NC-1, 31 DEC 2020 to 28 JAN 2021