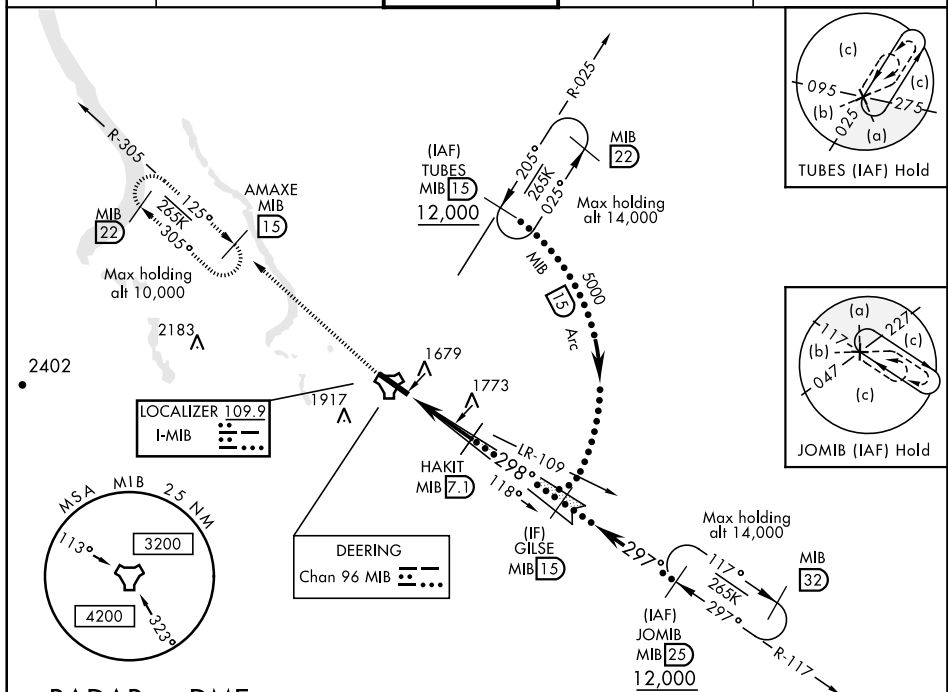


HI-ILS or LOC Z RWY 30

LOC I-MIB 109.9	APCH CRS 298°	Rwy ldg 13,198 TDZE 1646 Arprt Elev 1666	JAL-5013 [USAF]	MINOT AFB (KMIB)
---------------------------	-------------------------	---	-----------------	------------------

* When ALS inop, increase CAT CDE RVR to 40 and vis to ¾ mile. ** When ALS inop, increase CAT CDE RVR to 60, vis to 1½ mile, *** Circling Not Authorized N of Rwy 12-30.	ALSF-1 (A1)	MISSED APPROACH: Climb to 5000 via MIB TACAN R-305 direct AMAXE and hold.
--	----------------	--

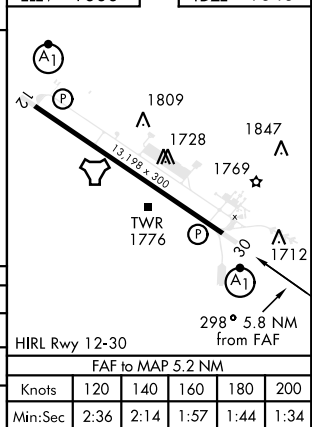
ATIS ★ 278.8	MINOT APP CON 119.6 363.8	MINOT TOWER ★ 120.65 253.5	GND CON 134.0 275.8	CLNC DEL 326.2
------------------------	-------------------------------------	--------------------------------------	-------------------------------	--------------------------

RADAR or DME
REQUIRED

EMERG SAFE ALT 100 NM 4700

5000 MIB R-305	AMAXE MIB 15	GILSE R-117 15	5000
TACAN	↑ LOC Only FAREG 1.9	HAKIT Z 7.1	3200
6 NM	5.2 NM	GS 2.50° TCH 49	
CATEGORY	C	D	E
S-ILS 30 *	1846/24	200 (200-½)	
S-LOC 30 **	2040/35	394 (400-¾)	
CIRCLING ***	2180-1½ 514 (600-1½)	2220-2 554 (600-2)	

ELEV 1666 TDZE 1646



HI-ILS or LOC Z RWY 30