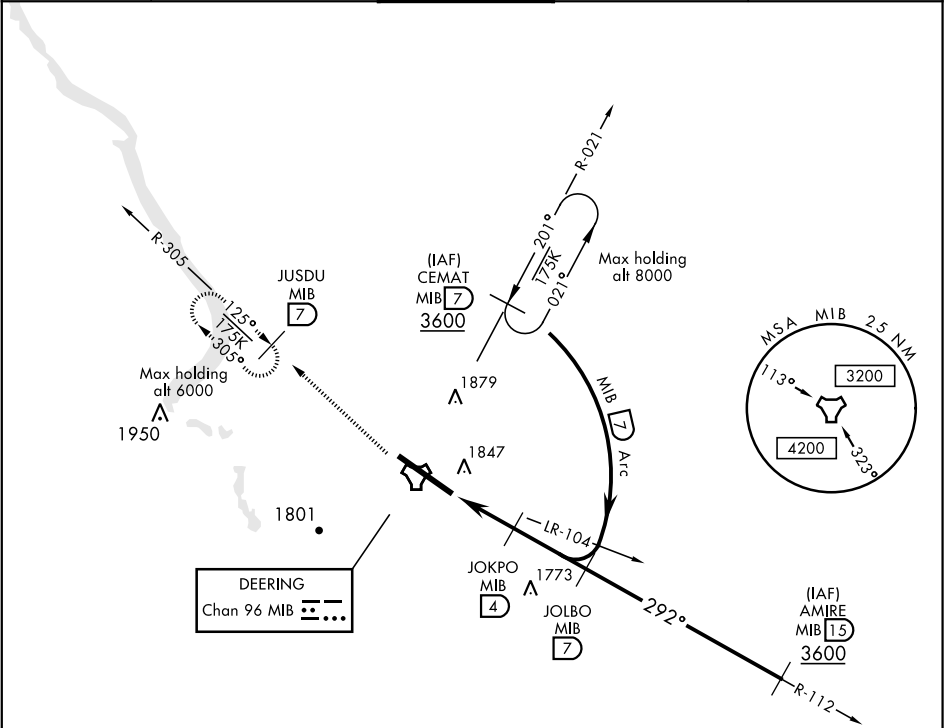


TACAN MIB Chan 96	APCH CRS 292°	Rwy ldg 13,198 TDZE 1646 Arprt Elev 1666	AL-5013 [USAF]	MINOT AFB (KMIB)
* When ALS inop, increase RVR to 28 and vis to ½ mile.			ALSF-1 	MISSED APPROACH: Climb to 3600 via MIB TACAN R-305 direct JUSDU and hold.
ATIS ★ 278.8	MINOT APP CON 119.6 363.8	MINOT TOWER ★ 120.65 253.5	GND CON 134.0 275.8	CLNC DEL 326.2



NC-1, 31 DEC 2020 to 28 JAN 2021

NC-1, 31 DEC 2020 to 28 JAN 2021

COPTER ONLY
EMERG SAFE ALT 100 NM 4700

