

MINOT, NORTH DAKOTA

## COPTER RNAV (GPS) RWY 12

WAAS CH 71280 W12A	APCH CRS 118°	Rwy Idg 13,198 TDZE 1666 Arpt Elev 1666
--------------------------	------------------	---

AL-5013 (USAF)

MINOT AFB (KMIB)

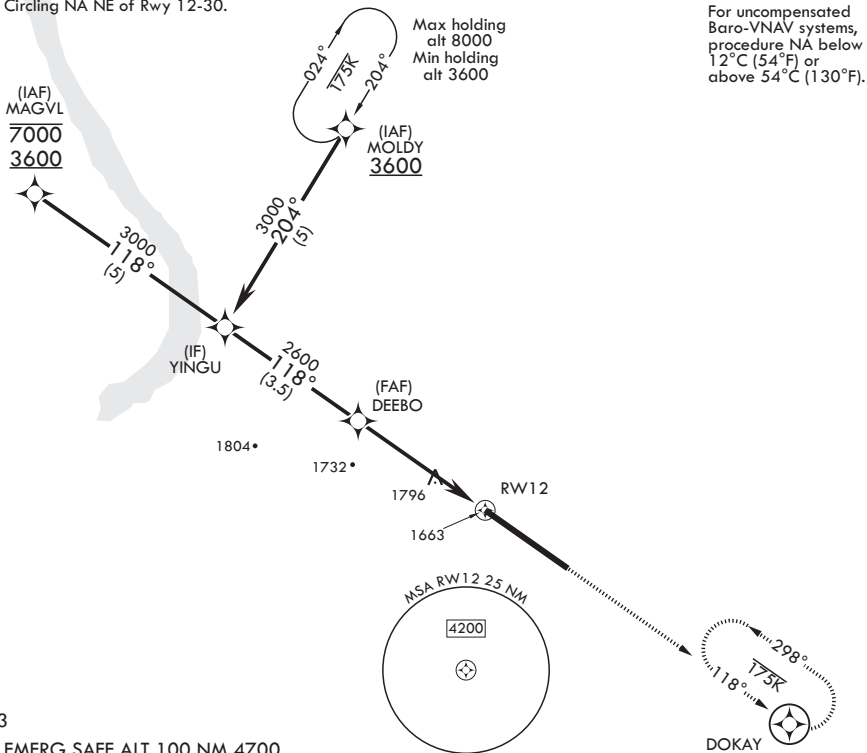
\* When ALS inop, increase CAT A RVR to 40, vis to 3/4 mile.  
 \*\* When ALS inop, increase CAT A vis to 1 5/8 miles.  
 \*\*\* When ALS inop, increase CAT A RVR to 55, vis to 1 mile.



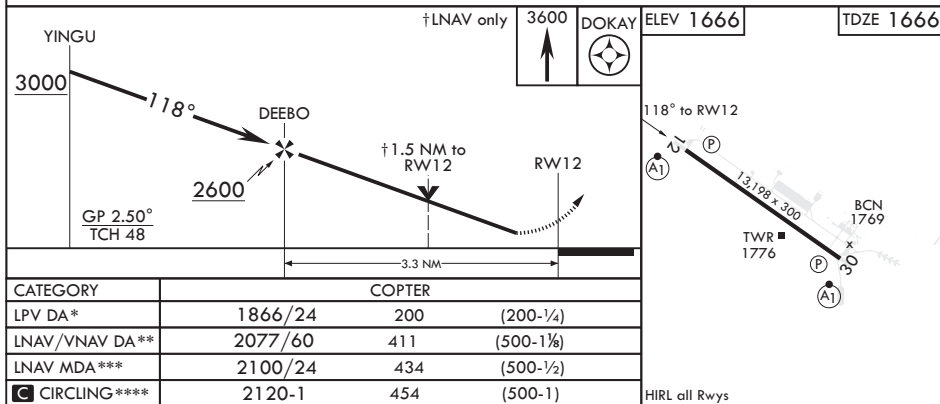
**MISSED APPROACH:** Climb to 3600 direct DOKAY and hold.

ATIS★ 278.8	APP CON 119.6 363.8	TOWER★ 120.65 253.5	GND CON 134.0 275.8	CLNC DEL 326.2
----------------	------------------------	------------------------	------------------------	-------------------

\*\*\*\* Circling NA NE of Rwy 12-30.



1953  
• EMERG SAFE ALT 100 NM 4700



MINOT, NORTH DAKOTA

48°25'N - 101°21'W

MINOT AFB (KMIB)

## COPTER RNAV (GPS) RWY 12

Orig 19JUL18

NC-1, 31 DEC 2020 to 28 JAN 2021