

TACAN RWY 17

TACAN RDR Chan 111	APCH CRS 179°	Rwy ldg TDZE Arprt Elev	12,351 900 911
-----------------------	------------------	-------------------------------	----------------------

AL-5010 (USAF)

GRAND FORKS AFB (KRDR)

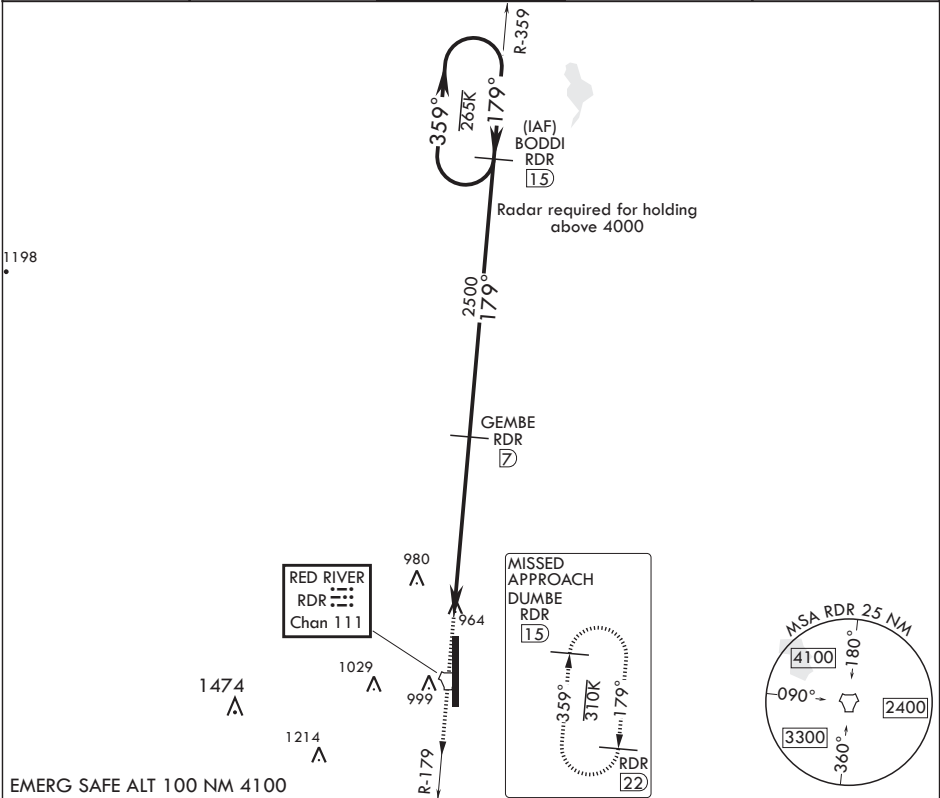
* When ALS inop, increase CAT AB RVR to 55, vis to 1 mile; CAT CDE RVR to 50, vis to 1 mile.
** Circling E of Rwy 17-35 not authorized.

ALSF-1



MISSED APPROACH: Climb to 3000 on RDR TACAN R-179 to DUMBE and hold.

ATIS 273.45	APP CON 118.1 318.1	RED RIVER TOWER 124.9 349.0	GND CON 119.15 275.8	CLNC DEL 119.15 360.7
----------------	------------------------	--------------------------------	-------------------------	--------------------------



3000

RDR

R-179

DUMBE

RDR

15

BODDI

15

ELEV 911

TDZE 900

TACAN

PAROC 1.8

2.3

5.2 NM

2500

179°

359°

179°

3000

≤ 2.56°

TCH 50

CATEGORY	A	B	C	D	E
S-17*	1240/24 340 (400-½)		1240/40 340 (400-¾)		
CIRCLING**	1340-1 429 (500-1)	1380-1 469 (500-1)	1380-1½ 469 (500-½)	1480-2 569 (600-2)	2040-3 1129 (1200-3)

12,351 x 150

TWR 1029

1020

1021

1053

973

35

HIRL Rwy 17-35

TACAN RWY 17

NC-1, 31 DEC 2020 to 28 JAN 2021

NC-1, 31 DEC 2020 to 28 JAN 2021