


| | | | |
|------------|---------|----------|------|
| VORTAC RAP | APP CRS | Rwy Idg | 8701 |
| 112.3 | 322° | TDZE | 3160 |
| Chan 70 | | Apt Elev | 3204 |

VOR or TACAN RWY 32

RAPID CITY RGNL (RAP)

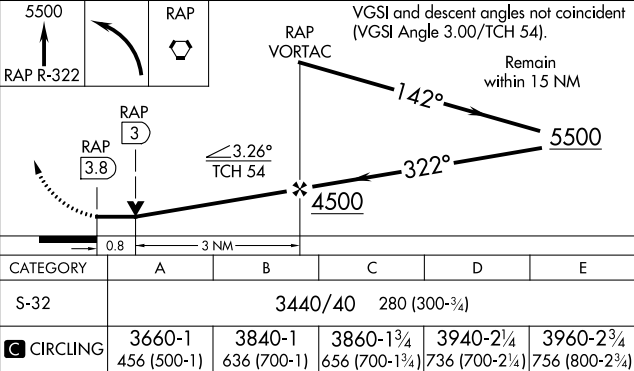
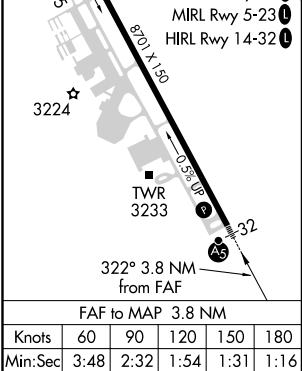
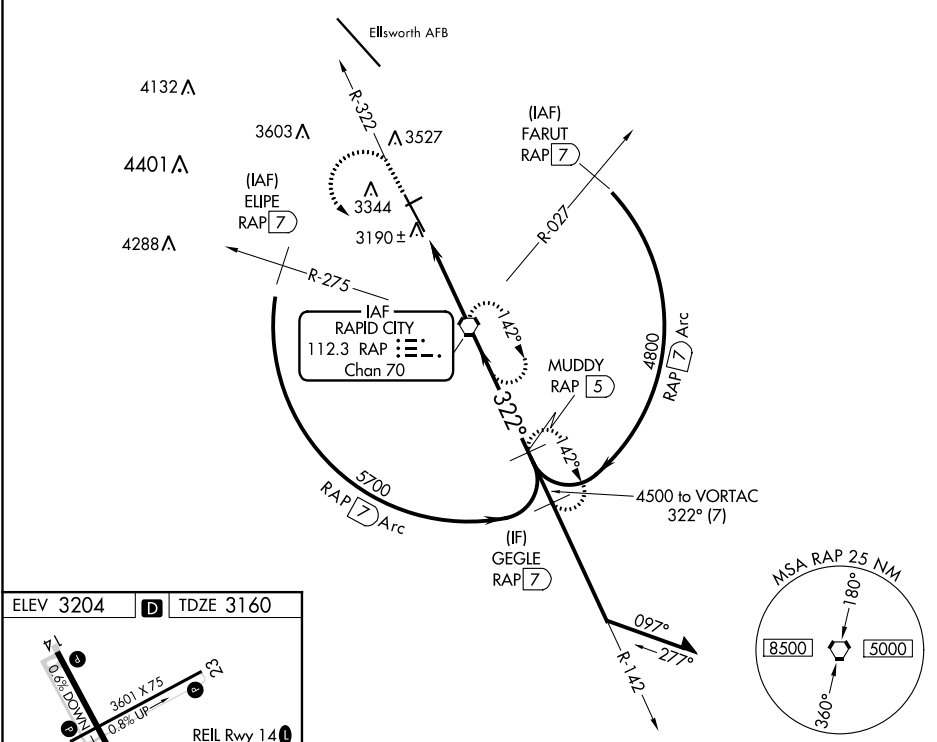
⚠ For inoperative ALS, increase S-32 all Cats visibility to 1 SM.

MALSR



MISSED APPROACH: Climb to 5500 on RAP R-322 then left turn direct RAP VORTAC and hold. (TACAN aircraft continue on RAP R-142 to MUDDY/RAP 5 DME and hold SE, RT, 322° inbound.)

| | | | | |
|-----------------|------------------------------------|---|------------------|------------------|
| ASOS 118.525 | ELLSWORTH APP CON ★ 119.5 259.1 | RAPID CITY TOWER ★ 125.85 (CTAF) 0 257.8 | GND CON 121.9 | UNICOM 122.95 |
|-----------------|------------------------------------|---|------------------|------------------|



NC-1, 31 DEC 2020 to 28 JAN 2021

NC-1, 31 DEC 2020 to 28 JAN 2021