

RAPID CITY, SOUTH DAKOTA

AL-877 (FAA)

19339

WAAS CH 60919 W14A	APP CRS 144°	Rwy Idg 8701 TDZE 3191 Apt Elev 3204
--	------------------------	---

RNAV (GPS) RWY 14
RAPID CITY RGNL (RAP)

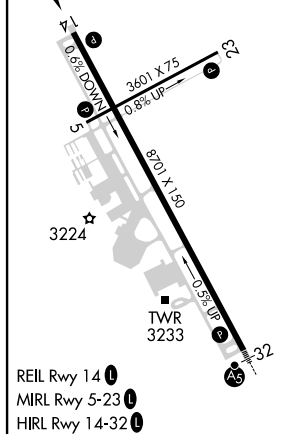
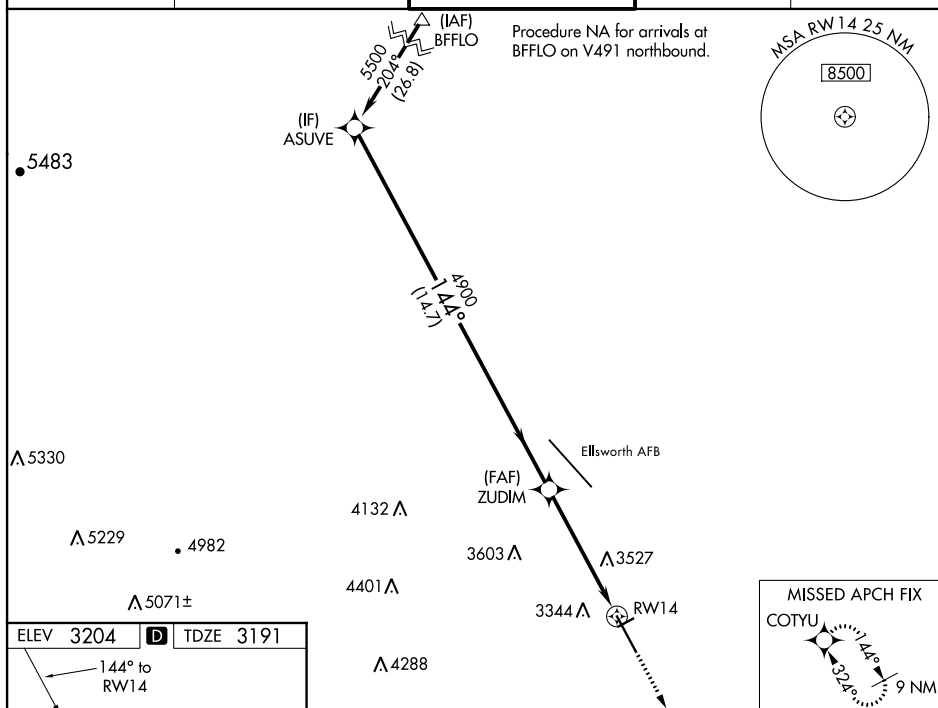
RNP APCH.



Rwy 14 helicopter visibility reduction below $\frac{3}{4}$ SM NA.
For uncompensated Baro-VNAV systems, LNAV/VNAV NA below -26°C or above 48°C.

MISSED APPROACH.
Climb to 5500 direct
COTYU and hold.

ASOS 118.525	ELLSWORTH APP CON ★ 119.5 259.1	RAPID CITY TOWER ★ 125.85 (CTAF) 0 257.8	GND CON 121.9	UNICOM 122.95
------------------------	---	--	-------------------------	-------------------------



CATEGORY	A	B	C	D	E
LPV DA	3450-1 259 (300-1)				
LNAV/VNAV DA	3871-2½ 680 (700-2½)				
LNAV MDA	3780-1 589 (600-1)		3780-1¾ 589 (600-1¾)		
C CIRCLING	3780-1 576 (600-1)	3840-1 636 (700-1)	3860-1¾ 656 (700-1¾)	3940-2¼ 736 (800-2¼)	3960-2¾ 756 (800-2¾)

RAPID CITY, SOUTH DAKOTA
Amdt 2C 05DEC19

44°03'N-103°03'W

RAPID CITY RGNL (RAP)
RNAV (GPS) RWY 14

NC-1, 31 DEC 2020 to 28 JAN 2021

NC-1, 31 DEC 2020 to 28 JAN 2021