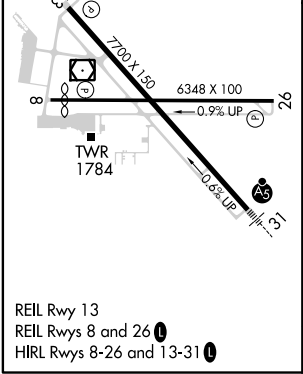
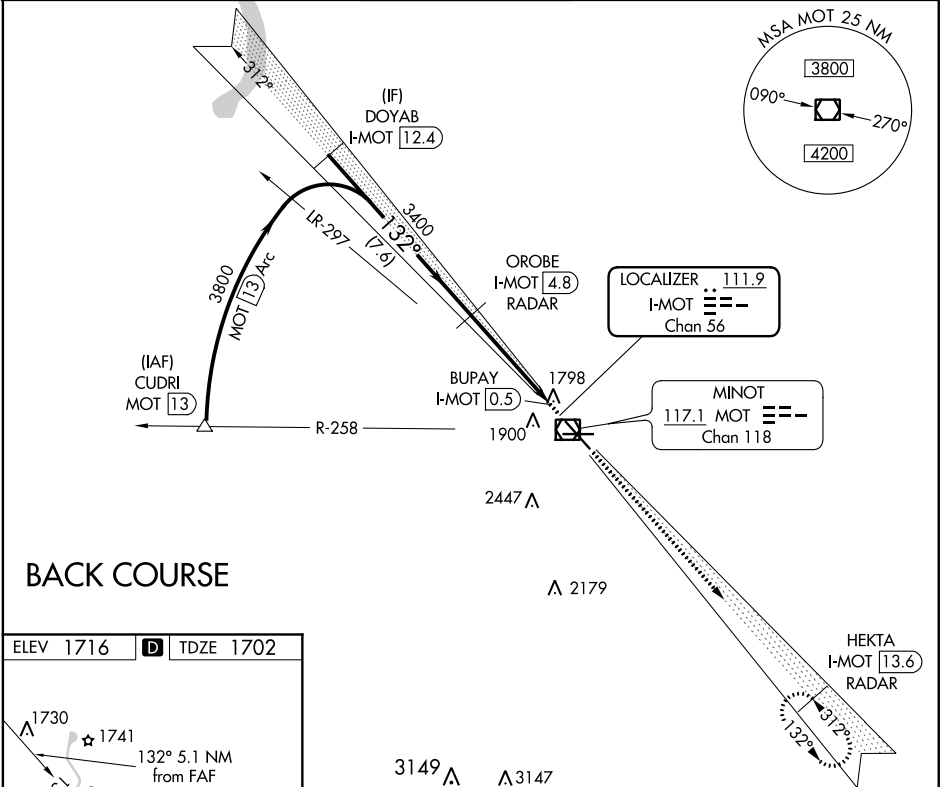


LOC/DME I-MOT 111.9 Chan 56	APP CRS 132°	Rwy Idg 7700 TDZE 1702 Apt Elev 1716
---	------------------------	---

LOC BC RWY 13
MINOT INTL (MOT)

DME required ▽ ▲		MISSED APPROACH: Climb to 3700 on I-MOT SE course to HEKTA/I-MOT 13.6 DME/RADAR and hold.		
ASOS 118.725	MINOT APP CON ★ 119.6 363.8	MAGIC CITY TOWER ★ 118.2 (CTAF) 0 251.125	GND CON 121.9	UNICOM 122.95



Disregard glide slope indications. Use I-MOT DME when on LOC course.			
DOYAB I-MOT 12.4	3800	3400	3700
OROBE I-MOT 4.8	3400	3400	3700
BUPAY I-MOT 0.5	3400	3400	3700
HEKTA I-MOT 13.6	3400	3400	3700
7.6 NM 4.3 NM 0.8 NM			
CATEGORY	A	B	C
S-LOC13	2060-1	358 (400-1)	
CIRCLING	2200-1	484 (500-1)	2280-1½ 564 (600-1½)
			2280-2 564 (600-2)