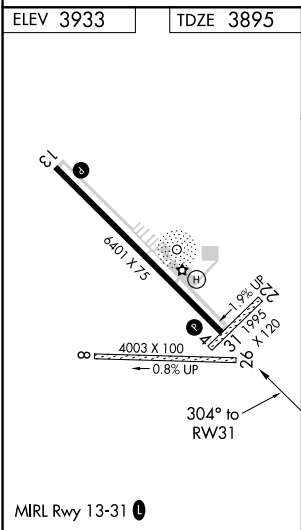
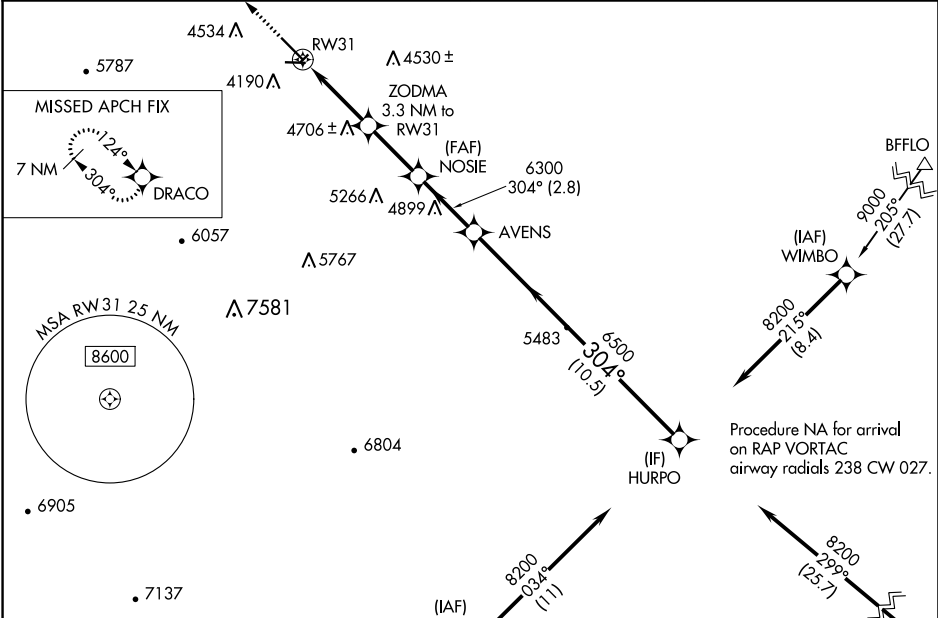


WAAS CH 77821 W31A	APP CRS 304°	Rwy Idg TDZE Apt Elev	6401 3895 3933
--	------------------------	-----------------------------	---

RNAV (GPS) RWY 31
BLACK HILLS-CLYDE ICE FIELD (SPF)

RNP APCH.	MISSED APPROACH: Climb to 7000 direct DRACO and hold.
Circling NA to Rwy 4, 8, 22 and 26.	

AWOS-3 118.325	ELLSWORTH APP CON 119.5 259.1	GCO 121.725	UNICOM 122.7 (CTAF) 0
--------------------------	---	-----------------------	---------------------------------



 NEWCASTLE ECS 7000 LAGLY 9300 052° (32.1)		 (IAF) RAP		
 DRACO 7000 052° (32.1)		VGSI and RNAV glidepath not coincident (VGSI Angle 3.00/TCH 50).		
*LNAV only		HURPO 8200		
 RW31 3.3 NM		NOSIE 6300 304° 6500 3.3 NM		
ZODMA 3.3 NM to RW31 5260*		AVENS 6500 2.8 NM		
10.5 NM		GP 3.77° TCH 50		
CATEGORY	A	B	C	D
LPV DA	4281-1½ 386 (400-1½)			NA
LNAV MDA	4860-1¼ 965 (1000-1½)	4860-1½ 965 (1000-1½)	4860-3 965 (1000-3)	NA
CIRCLING	4860-1¼ 927 (1000-1½)	4860-1½ 927 (1000-1½)	5540-3 1607 (1700-3)	NA

NC-1, 31 DEC 2020 to 28 JAN 2021

NC-1, 31 DEC 2020 to 28 JAN 2021