

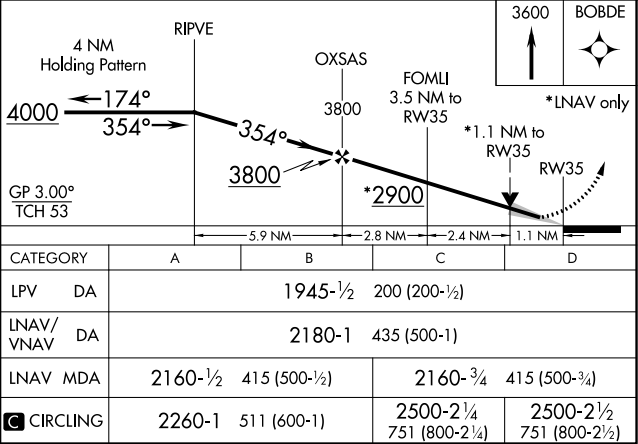
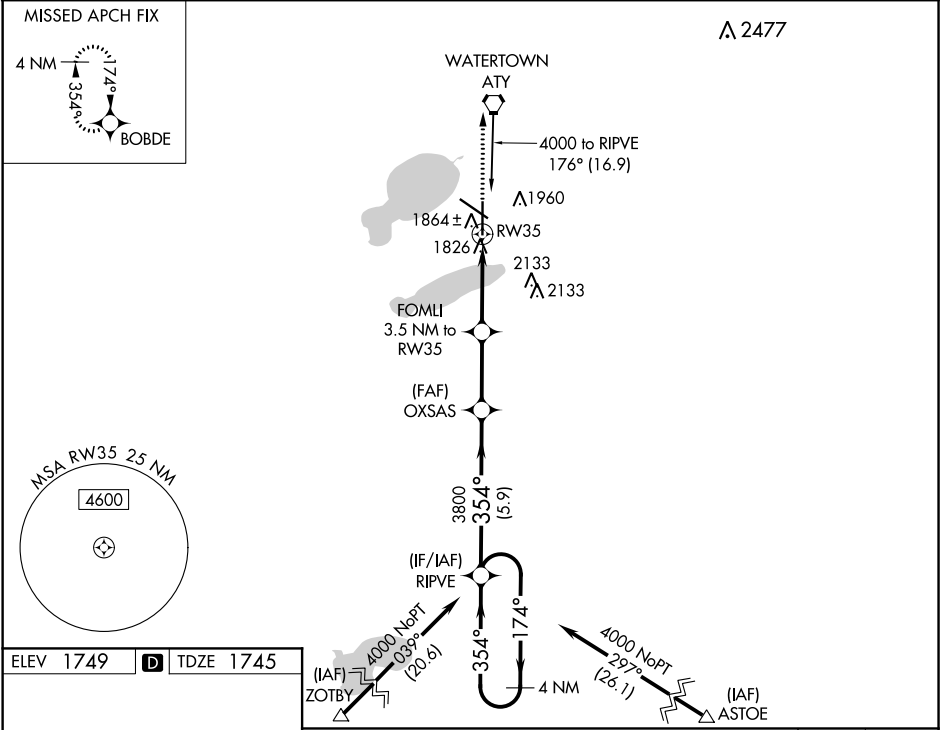
WAAS CH 82614 W35A	APP CRS 354°	Rwy Idg TDZE 1745 Apt Elev 1749
--	------------------------	---

RNAV (GPS) RWY 35

WATERTOWN RGNL (ATY)

<div><div>▼</div><div>▲</div></div> <div>For uncompensated Baro-VNAV systems, LNAV/VNAV NA below -21°C (-5°F) or above 54°C (130°F). DME/DME RNP -0.3 NA. For inop ALS, increase LNAV Cat C/D visibility to 1½ SM.</div>	<div>MALSR</div> <div></div>	MISSED APPROACH: Climb to 3600 direct BOBDE and hold.
--	------------------------------	---

ASOS 126.625	MINNEAPOLIS CENTER 128.5 306.2	UNICOM 123.05 (CTAF) 0
------------------------	--	----------------------------------



NC-1, 31 DEC 2020 to 28 JAN 2021

NC-1, 31 DEC 2020 to 28 JAN 2021